

Look Up. Challenge Poverty.

2017 ANNUAL REPORT



Episcopal
Community
Services

Episcopal Community Services challenges and reduces intergenerational poverty. We increase the ability of people to improve their lives and achieve economic independence. We call upon every person to participate in sustainable, positive change for our communities.

Episcopal Community Services
225 S. 3rd Street
Philadelphia, PA 19106

215.351.1400
info@ecsphilly.org
ecsphilly.org

2017 BOARD OF TRUSTEES	
The Rt. Rev. Daniel G. P. Gutierrez, <i>Chairman</i>	
L. Frederick Sutherland, <i>President</i>	
The Rev. Peter T. Vanderveen, <i>Vice President</i>	
Julia B. DeMoss, <i>Vice President & Assistant Secretary</i>	
Mollie A. Suddath, <i>Secretary</i>	
John Pickering II, <i>Treasurer</i>	
Steve Lyons, CFA, <i>Assistant Treasurer</i>	
Kurt W. Brunner	
The Rev. Mariclaire Partee Carlsen	
John G. Chou, Esq.	
The Rev. John D. Daniels	
Mimi Drake	
Stacey M. Duke-Middleton	
The Rev. Amanda B. Eiman	
Matthew J. Espe	
Earl M. Forte III, Esq.	
Richard Henriques	
Barbara C. Kozemchak	
David D. Langfitt, Esq.	
The Rev. John E. Midwood	
Cynthia R. Muse	
John Randolph	
The Rev. Richard J. Robyn	
Holly K. Srogota, Esq.	
The Very Rev. Judith A. Sullivan	
The Rev. Richard L. Vinson	
Carter D. Williams	
The Rev. William H. Wood III	
David E. Griffith, <i>Executive Director</i>	
A MESSAGE FROM LEADERSHIP	2
THE YEAR IN REVIEW	4
STORIES OF SUCCESS	9
ST. THOMAS' CHURCH, WHITEMARSH	
A Community with a Common Call to Service	10
SHANELLE	
A Loving Mother with a Happy Home	16
TAMIR	
A Little Man with a Big Heart	18
FINANCIAL SUMMARY	20
OUR SUPPORTERS	22
OUR TEAM	44



This past year will be remembered as a moment of transformation for Episcopal Community Services just as it will be for those we served.

A leading provider of social services in the Philadelphia region, ECS works with thousands of individuals and families each year to provide shelter and supportive housing, wellness, workforce development, and afterschool enrichment for children and youth.

While the programs and services for which we are known continued to expand, the agency gave great consideration to what our work could become in the future. We undertook the creation of a strategic plan and a once-in-a-generation examination of our impact. The result is a holistic, leading-edge approach to combat intergenerational poverty.

Revitalized by a new brand and this research-informed shift, ECS is positioned to build on our legacy of progress and compassion.

With the clarity that comes from a crisp vision, mission, and four core values, we measure our own success through our success in providing individuals and families with the tools and support they need to achieve their goals and obtain economic independence.

We believe that every individual has the courage, capacity, and will to define and achieve their measure of success and to help remove barriers for another in need. These beliefs are lived by our staff and board of trustees, by the participants in our programs, and by you, with your support as donors, volunteers, and advocates.

The year was a journey for us, one of reflection and refocus, just as it was for the individuals who came to ECS with the hopes of a better tomorrow. In the pages that follow, you will learn more about our journey and stories of theirs. Know that these transformations could not have happened without you.

The gospel calls for us to strive for justice and peace among all people, and respect the dignity of every human being. Together, we will answer this call and live into the mission given to us by our faith.

On behalf of the people we serve, thank you for your support, for your prayers, and for your love for your fellow man.

In faith,

L. Frederick Sutherland
President, Board of Trustees

David E. Griffith
Executive Director

To believe in
the possibility
of change is
to believe in
the possibility
of people.

The Year in Review

Change doesn't happen overnight.

We know this to be true for ourselves and for the individuals and families we work with every day, week, and month of the year. They are on journeys to establish a life of self-sufficiency. Helping them get there requires patience and perseverance. It requires programs that work, targeted advocacy, high-quality operations, and data tracking. And it requires that we listen. Listening to our participants helps us better understand who they are, where they come from, and where they want to go. After all, they know better than we do what they need to make their dreams come true.



Look Up. Challenge Poverty., our new tagline, is a call to action for our partners, supporters, and participants, and a dedicated commitment to making change.

OUR ORGANIZATION

One brand new look and logo unveiled

One comprehensive three-year strategic plan developed

HOUSING

98%

OF FAMILIES IN PERMANENT SUPPORTIVE HOUSING MAINTAINED HOUSING

113 Families of Mothers and Children Resided at St. Barnabas Mission Emergency Shelter

35 Families Transitioned into Safe, Stable Homes of Their Own

120 New ECS Families Received Supportive Services at Mt. Vernon Manor in the Mantua Neighborhood of West Philadelphia

1,153 DONORS

OUR VOLUNTEERS

3,828 HOURS GIVEN IN TIME BY GENEROUS VOLUNTEERS

2,400 Meals Prepared by Cook-Off Volunteers for Frail Seniors

24 Volunteer-Led Community Dinners Served in Darby, PA

86 Seniors Paired with Compassionate Friends through Dolphin Companions and Communicare

PARISH INVOLVEMENT

2,275 PARTICIPANTS PROVIDED SUPPORT THROUGH GIFT-IN-KIND CONTRIBUTIONS

66 PARTNERING PARISHES ACROSS THE DIOCESE OF PENNSYLVANIA

518 BACKPACKS FILLED FOR SCHOOL CHILDREN

84 SPRING CLEANING BASKETS FILLED

873 GIFTS COLLECTED AT CHRISTMASTIME

HEALTH AND WELLNESS

173,900 NUTRITIOUS MEALS SERVED AGENCY-WIDE

8 HEALTH AND WELLNESS PARTNERSHIPS

136 HEALTH SCREENINGS PROVIDED FOR CHILDREN AND ADULTS

30 SENIOR FACILITIES SPANNING THE 5-COUNTY REGION HOSTED DOLPHIN COMPANIONS

YOUTH AND WORKFORCE DEVELOPMENT

85% RISE ALUMNI RETAINED EMPLOYMENT FOR 120 DAYS AFTER PROGRAM GRADUATION

100 Paid Summer Internships City-Wide, Including Workforce Development Training

194 New Youth Participants Welcomed with the Addition of Two New Out of School Time (OST) Afterschool Program Locations

30 OST Family Nights, Where Families Bond with the Afterschool Community

47 Employer Partners Providing Participants with Career Opportunities and Paid Internships

Stories of Success

What a difference a year can make.

We believe that every individual has the courage, capacity, and will to define and achieve their measure of success, and to help remove barriers for another in need.

In one year's time, we have seen wide-eyed teenagers blossom into young, talented professionals. We have witnessed homeless mothers get keys to their very first homes. Pairs of people, once strangers, have turned their friendships into family-like bonds. We have watched children who played on afterschool playgrounds return as responsible summer camp interns.

In a year of 2,000 people served, ahead are three stories that stand as a testament of the transformation and growth that we know people can achieve. With volunteers, stakeholders, supporters, and participants, every relationship at ECS is a true collaborative partnership. And the people in our programs remain our guiding light—leading the way with grit, tenacity, and heart.

A COMMUNITY WITH A COMMON CALL TO SERVICE

Episcopal Community Services means something different to all who know the name.

Mothers experiencing homelessness know ECS as a safe haven where they and their children can rest and recharge at night. Residents just southwest of the city know it as the host of their favorite family activity, Darby Dinners, where a sense of community is served alongside nutritious meals twice a month. And parishes across the Diocese of Pennsylvania know ECS as a long-time partner in carrying out a common call to service.

The support of St. Thomas’ Church, Whitemarsh spans decades. In recent years, the church and its congregation have worked hand-in-hand with ECS to provide funds for youth programs and host celebrations like Harvest Fest and the Be An Angel Christmas Party.

Proceeds from their hugely-successful monthly rummage sale, The Barn’s Second Saturday Sale, have funded much of their charitable giving through the years. Hoping to deepen their impact, St. Thomas’ Outreach Committee recently reevaluated how it would disburse grants and decided to focus its giving through larger sums to carefully-selected missions.

Episcopal Community Services was awarded a three-year \$100,000 grant to pilot a volunteer mentoring partnership that benefits youth in our workforce development programs.

“We knew that ECS would be a great partner because we had such a long history of [providing] activities like Be An Angel,” said John Kepner,

parishioner of St. Thomas’ Church, long-standing ECS volunteer, former ECS board president, and husband to Mimi Kepner, also a former ECS board president. Kepner has championed the program with ECS staff since its early days.

“These kinds of programs are most impactful for helping others, and also most impactful for our parishioners—where they can be directly involved in hands-on activities. A mentoring program has all those ingredients: hands-on participation for parishioners [and] more impactful dollars to an organization that had proven over many, many years, its excellence in administrative capabilities and in helping those that need help,” Kepner added.

Jahniya, who had participated in our youth and workforce development programs for three years, was someone looking for extra help.

Bright and hardworking, she first signed up for Seeing Youth Succeed (SYS) as a ninth grader, where on Saturday afternoons, 14 through 18-year-olds hone their soft professional skills and begin

96%

of individual participants placed in jobs retain employment one year later.



After years of participating in Seeing Youth Succeed (SYS) and working three paid summer internships, Jahniya looks forward to beginning her freshman year of college at Clarion University of Pennsylvania.



“It’s important to have those kinds of people around you as an example ... to keep on going.”

preparing for life after high school. The program matches each teen’s aptitudes and interests to a college and career plan to help them set their vision for the future.

Jahniya was a high school senior at the time the mentor program was launching. About to begin the daunting college application process, she was unsure of where to start.

“In my school, we had college counselors, but there were so many of us [students]. They didn’t have one-on-one time for everybody,” she said. “So I thought it would be best if I had a mentor that was only about me—that I’d be the only person they had to worry about.”

ECS also recruited qualified mentees from the RISE Initiative, SYS’ counterpart program where young adults up to age 30 work on the basics of getting a job, such as building a resume, creating and submitting a job application, interviewing, and networking.

Research proves that having, or not having, the proper social supports affect one’s wellbeing. Some RISE participants may not have the strongest family networks, nor are they necessarily

More than 100 paid internships were provided, giving young adults real life experiences that support personal growth and professional development.

\$100K

St. Thomas’ Church awarded ECS a three-year \$100,000 grant to pilot the volunteer mentoring program.

connected to people who share their goals, like earning a college degree or meaningful, long-term employment.

“The intention was to introduce RISE mentees to a new network of people who have accomplished similar goals. It’s important to have those kinds of people around you as an example ... to keep on going,” said Arley Styer, MSS, MLSP, chief of programs, who created and expanded the workforce development programming over the past four years.

Ten mentors from St. Thomas’ and 10 mentees from SYS and RISE were identified to test the new program. After intensive training, government clearances, and time with staff, St. Thomas’ parishioners were on their way to make a difference in the lives of the young people they would come to know.

Jahniya was connected to her mentor, Ms. Kelly, a financial professional, who helped Jahniya navigate her way through the college application and financial aid processes.

“If I hadn’t had her, my process would have been a lot more stressful than it already was,” Jahniya said. “Ms. Kelly was my mentor, but she was also like a friend or parent at the same time because she gave me responsibility. She really looked out for me.”

In the coming year, ECS and St. Thomas’ will begin the second cohort of the pilot. New mentors and mentees are being added, and the work of expanding the mentor opportunity to others will begin, thus expanding the collective impact that is possible when we work together.

Whatever comes to mind when you hear the name, ECS represents one community with one common purpose. For individuals who want to help make the world a better place, ECS provides opportunities to volunteer time and expertise and continues to be a trusted cause in which to invest. For Jahniya and other motivated young people, ECS is a great coach—a place that will come to mind when asked who their favorite teacher was growing up. ♥

We call upon every person
to participate in sustainable,
positive change for
our communities.

A LOVING MOTHER WITH A HAPPY HOME

After years of trauma and unstable housing, Shanelle has found her way home.

Last year, she was accepted into ECS’ permanent supportive housing program, and today, she and her daughters live comfortably.

Shanelle looks back fondly on her childhood. Her mother was a single parent and provided a comfortable life for Shanelle and her four siblings. Not once did they go to bed hungry or have to worry about the gas or electricity being shut off. Sure, she may have been stricter than other moms in the neighborhood, but Shanelle, a mother now herself, understands why.

“Our father wasn’t really there, so she worked [extra hard] to take care of us. Whatever she did, she did it for her kids,” Shanelle said with admiration and a bit of remorse.

Shanelle was only 20 when her mother died. Unable to afford to stay in their childhood home, the close-knit siblings moved in with their grandmother for a couple of years until she, too, passed away. Shanelle was a single mother of two young girls. With nowhere to go, she stayed with friends before deciding to find a shelter for her family.

“I just didn’t want to sleep on anybody’s couch with two kids,” she said. “I was like ‘No, this is not the way.’ [Shelter] was hard. You don’t want to put your kids through that ... I didn’t have to go through that.”

Since transitioning out of shelter and into our supportive housing program, Shanelle has been paired with a trusted case manager, is offered

life-skills workshops, health assessments, and employment support. With her case manager’s assistance, Shanelle is seeking family therapy to ensure her daughters process the significant transitions they have experienced.

“Motherhood is tough. I learn every day. I don’t have the answers for everything,” she said “but [I ask] ‘what can we do to make things better?’”

Shanelle has been working toward earning her GED and has her sights set on college to become a social worker. In five years, she plans to be a full-time social worker and first-time homeowner, possibly down South—“somewhere to start over ... [with] more job opportunities and a better living for my girls,” she said.

She stays humble and reminds herself that the assistance she receives from ECS is temporary—a stepping stone leading her to a life of self-sufficiency.

“I’m blessed. I really am,” Shanelle added. “People helped me get here ... and after what I’ve gone through, I want to give back.” ♥

35 The number of families from St. Barnabas Mission Emergency Shelter placed into safe, stable housing.



In addition to its emergency and permanent housing solutions, ECS offers supportive services for more than 120 low-income families living in subsidized housing complexes in the Mantua neighborhood of West Philadelphia.

A LITTLE MAN WITH A BIG HEART

Through the eyes of a kid, the Out of School Time (OST) program may seem like all fun and games, but in the communities where it’s offered, OST is known to be much more.

OST is an afterschool program that exposes youth to academic enrichment and 21st Century skills. This year, ECS expanded its OST offerings to Thomas K. Finletter Academics Plus School in North Philadelphia and Add B Anderson School in West Philadelphia. Tamir’s school is one of the program’s newest locations.

Tamir is an imaginative kid, and even at his young age, he shows a lot of integrity. When greeted by an adult, he is respectful and gives a handshake firmer than most people double his size.

The soon-to-be fourth grader is excited to join bigger and, according to him, better, activities, like the Boyz 2 Men Club that provides support to young boys during their formative years.

At home, Tamir is one of four children ages six through 16—with Tamir and two of his siblings enrolled in OST. When asked about how the program has been helpful to his family, Tamir is quick to answer with, “My mom can have a break!”

Recognizing that his parents are busy with work and maintaining a home, Tamir helps with household chores to lighten their load.

“I’m the one [kid] who cleans and makes their bed!” he said beaming.

His dutiful disposition is exemplified at OST, too, in activities that mold participants into leaders. On monthly Family Nights, he reliably shows up early to help prepare and stays late to clean up with staff.

“I just like to be helpful,” he added.

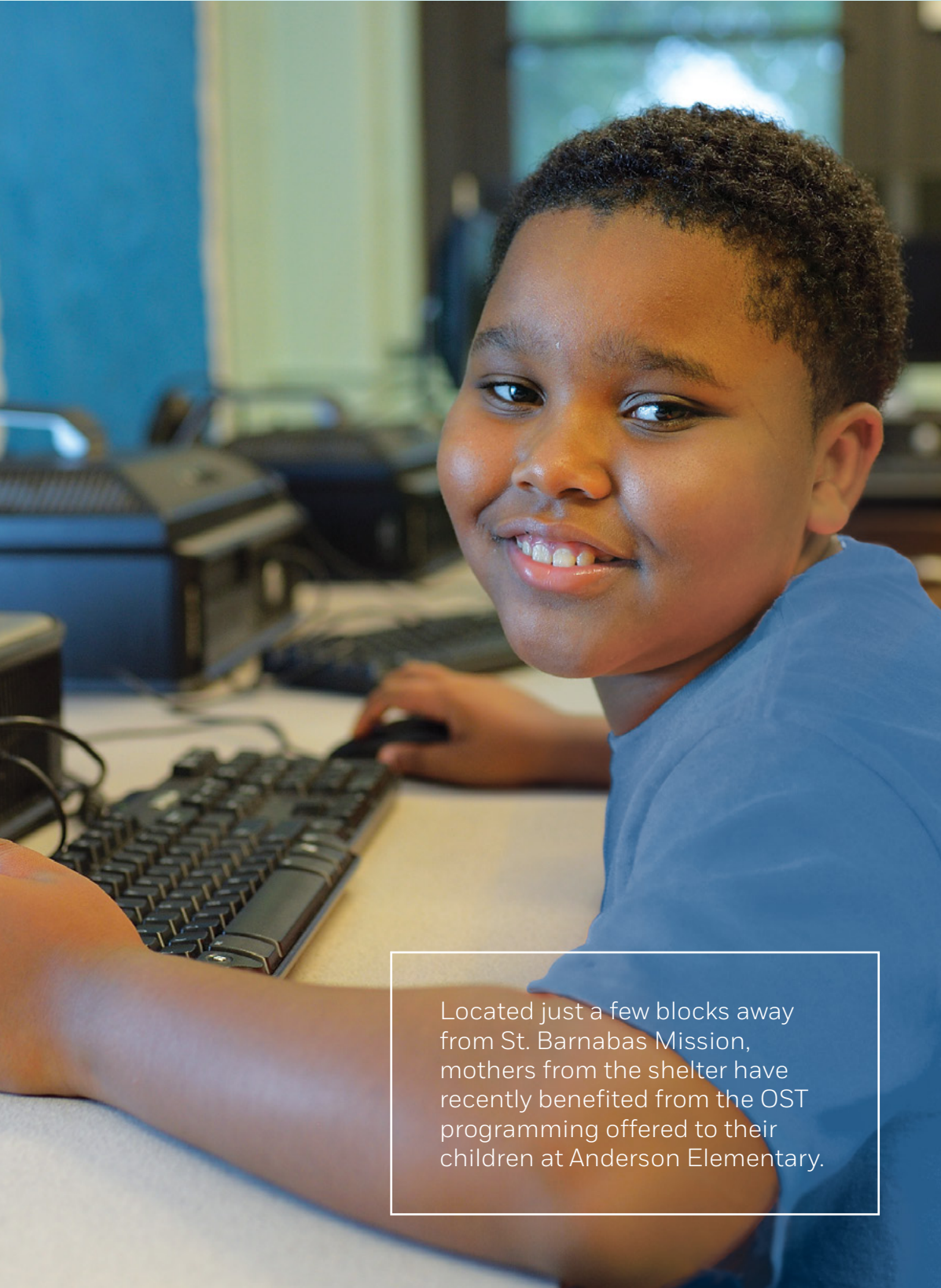
Tamir’s favorite and best subject in school is math, but he has struggled with literacy coursework in the past. Through camp-assigned journaling projects and supervised computer lab time with literacy software, his competency scores have skyrocketed. He even enjoys reading on his own now.

During the homework help hour at OST, Tamir is able to demonstrate his book-smarts and leadership skills. He takes pride in how quickly he finishes his assignments and is often found helping his classmates complete theirs.

The OST program continues to grow. We are preparing to expand to serving 1,000 students at six schools in the year to come. And we are sure that we’ll see more students like Tamir: smart and engaged, preparing to become the leaders of tomorrow. ▼

600

More than 600 elementary and middle school participants throughout the region.



Located just a few blocks away from St. Barnabas Mission, mothers from the shelter have recently benefited from the OST programming offered to their children at Anderson Elementary.

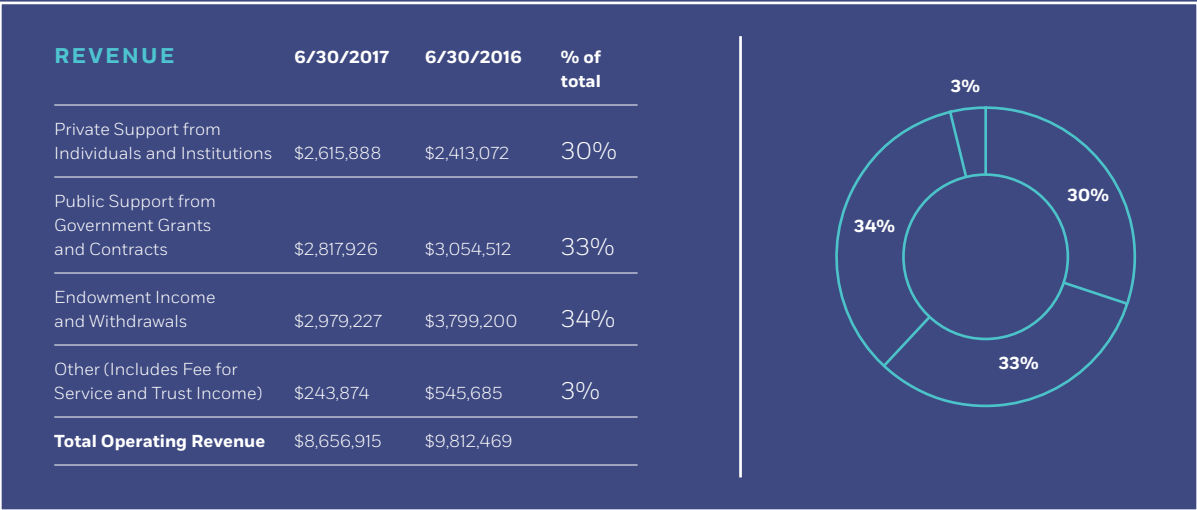
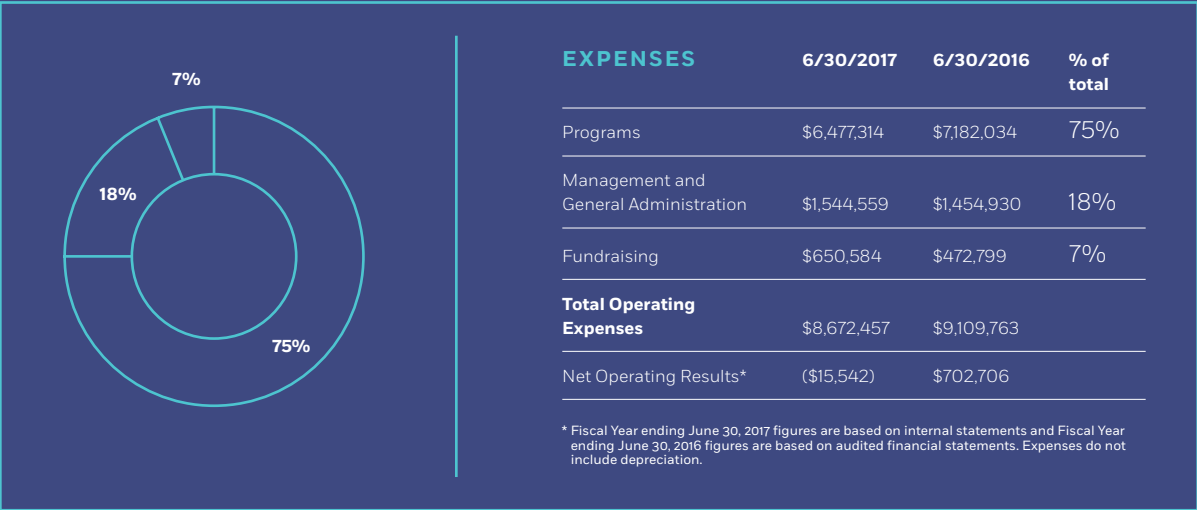
FINANCIAL SUMMARY

ECS draws strength from its commitment to fiscal responsibility. It’s the bedrock upon which we can improve programming and increase the scale of our impact.

2017 FISCAL YEAR

102%

WITH YOUR SUPPORT, WE EXCEEDED
OUR FUNDRAISING GOAL



ECS’ Endowment covers all overhead and administrative costs and was built by the generosity of generations of Episcopalians throughout the diocese.

ENDOWMENT VALUE	
Value of ECS Endowment as of June 30, 2016:	\$57,502,874
Investment Earnings	\$1,414,600
Withdrawals	(\$3,049,559)
Additions to Endowment	\$38,285
Investment Performance	\$6,073,427
Value of ECS Endowment as of June 30, 2017:	\$61,979,627
Capital Reserve*	\$282,104

* ECS funded a Capital Reserve to finance ECS capital needs during Fiscal Year ending June 30, 2017. In previous years, these funds would be additions to the Endowment.

WE ARE GRATEFUL FOR YOUR SUPPORT

In the 2017 fiscal year, our supporters remained faithful partners in our ability to change lives.

The generosity of individuals, parishes, foundations, and corporations represents a shared commitment to challenge and reduce intergenerational poverty. We are tremendously grateful to have your support in this common work and are energized by the momentum we continue to build together. On behalf of staff, the board of trustees, and those we serve, thank you.

“May the Lord now show you kindness and faithfulness, and I too will show you the same favor because you have done this.” (2 Samuel 2:6)

PHILANTHROPISTS' CIRCLE

The Philanthropists’ Circle is comprised of those individuals who have made cumulative gifts of \$100,000 or more to ECS. Their extraordinary commitment exemplifies the very essence of philanthropy as the “desire to improve the welfare of humanity through charitable activities.” We are deeply grateful for their leadership support.

- Anonymous
- Mr. and Mrs. Richard A. Ashley
- Lucy Ann Bangert†
- Mr. and Mrs. Thomas L. Bennett
- The Rev. and Mrs. Robert H. Betts
- Mr. and Mrs. Kurt W. Brunner
- James H. Bryson
- Mr. and Mrs. William C. Buck
- Dr. Rosemary Cadigan
- John G. Chou, Esq. and Teresa A. Wallace
- Rodney D. Day III
- Mr. and Mrs. William M. Doran
- Charlotte J. Dunmore
- Mr. and Mrs. P. Bruce Ferguson
- Mr. and Mrs. Earl M. Forte III
- Mary K. Gall†
- Anna and Tom Gerrity
- John P. Gregg, Esq.†
- Norman P. Harberger
- Mrs. Henry Harris
- Mr. and Mrs. Gordon L. Keen, Jr.
- Barbara C. Kozemchak
- Clifford W. Kozemchak
- Marie J. Lennan
- Jane C. MacElree
- Deborah N. Marsteller†
- Mr. and Mrs. Peter McCausland
- John and Faith Midwood
- Mrs. J. M. Moran
- Mr. and Mrs. Benjamin R. Neilson
- Annette E. and Charles F. Penniman†

- Mr. and Mrs. J. Barton Riley
- Mr. and Mrs. Herbert T. Rorer
- Buck and Mary Scott
- Mr. and Mrs. Richard L. Smoot
- Mr. and Mrs. L. Frederick Sutherland
- Mike and Betsey Useem
- Joanne T. Welsh
- Dixie G. Wigton
- Julie D. Williams
- Mrs. Spencer D. Wright III†

SUSTAINERS' CIRCLE

Sustainers’ Circle members have made a gift to The ECS Fund for a minimum of 15 consecutive years. Their consistent and unwavering support of ECS demonstrates their deep dedication to our mission.

- Anonymous
- Ms. Evelyn C. Aaron
- Ms. Nora E. Adelman
- Richard and Effie Alpert
- Mr. and Mrs. Richard A. Ashley
- Mrs. Duffield Ashmead III

† Deceased

- Mr. and Mrs. Nolan N. Atkinson, Jr.
- Warren and Susan Ayres
- Vance and Elna Bachman
- Mr. and Mrs. Ethan F. Ball, Jr.
- Lucy Ann Bangert†
- Ms. Jane A. Barth
- The Rt. Rev. and Mrs. Allen L. Bartlett, Jr.
- Mr. and Mrs. Timothy D. Bauder
- Susan and Bruce Baumann
- Ms. Patricia Beck
- Ms. Joan B. Bedell
- Thomas A. and Elizabeth E. Bell
- Mr. and Mrs. Thomas L. Bennett
- Mr. Roy E. Bernat
- The Rev. and Mrs. Robert H. Betts
- Mr. H. Lloyd Beyer III
- Mrs. Barbara Billings
- Mr. and Mrs. Paul M. Bingaman
- Mr. and Mrs. George C. Bishop
- Allen D. Black, Esq. and Mr. Randy Apgar
- Mrs. Jean G. Bodine
- Mr. Edward G. Boehne
- Mrs. Gail P. Boorse
- Mrs. Helen R. Bosley
- Mr. and Mrs. Wilmer A. Bowers
- Mr. John M. Briggs
- Mr. and Mrs. James H. Bromley
- Mrs. Elizabeth S. Browne
- The Rev. and Mrs. Arthur F. Brunner
- Mr. and Mrs. Kurt W. Brunner
- William S. Bireley and Lisa Brunner-Bireley
- Mr. and Mrs. William C. Buck
- Dr. and Mrs. Jerome G. Buescher
- Bill and Sheryl Bullitt
- Ms. Marylee Bunting
- John and Beverly Burkhardt
- John and Marcie Burns
- Mrs. Carol W. Butcher
- Dr. Rosemary Cadigan
- Miss Sheila Carson
- Mr. and Mrs. Barry T. Carter
- Dr. and Mrs. Henry Cecil
- William E. Christman III

Mrs. Anne W. Churchman
Mr. and Mrs. Peter O. Clauss
Mr. and Mrs. Isaac H. Clothier IV
Mr. and Mrs. Tristram C. Colket, Jr.
Col. and Mrs. William A. Connelly
Ms. Mary H. Cooke
Mrs. Jean G. Copeland
Betsey and Ward Corkran
Mrs. Henry D. Cornman III
Ms. Dorothy F. Cousins
Mr. Robert W. Cox
Thomas G. Bernas[†] and Richard L. Craft
Mr. and Mrs. William A. Crawford
Ms. Lindsay S. Crosby
Mr. and Mrs. Dennis Cunningham
Mrs. F. J. Dallett
Dr. Giulio J. D'Angio
Mr. and Mrs. Fred L. Davidson
Mr. and Mrs. Mark A. Davis
Mr. Rodney D. Day III
Patricia M. Dean
Mr. Richard C. DeKalb
Mr. and Mrs. Darrell DeMoss
Merrill and Suzanne Detweiler
Iris L.[†] and Leonard C. Dickerson
Ms. Deborah A. Dooling
Mr. and Mrs. Richard Doyle
Mr. and Mrs. Donald F. Duclow
Ms. Karen Y. Duffy
Mr. and Mrs. William B. Eagleson, Jr.
Dr. and Mrs. L. Henry Edmunds, Jr.
Mrs. Jessie E. Engan
The Rev. and Mrs. N. Dean Evans
Mr. and Mrs. Arthur J. Eyre
Mr. and Mrs. P. Bruce Ferguson
Mr. and Mrs. Edward Finn
Mr. and Mrs. Earl M. Forte III
Mrs. Joan F. Fouracre
Mr. and Mrs. Carl H. Fridy
Mr. and Mrs. Reuben R. Garrett
Ms. Jane L. Garrison
Mary B. Geisz and Keith T. Pryor
Anna and Tom Gerrity
Ms. Gay P. Gervin
Mrs. Virginia P. Goodrich

Don and Betty Graff
Ms. Barbara P. Groshens
Mr. and Mrs. Henry F. Guckes
Rod and Linda Gunn
Dr. and Mrs. Richard A. Haggard
Mr. Norman P. Harberger
Mrs. Nancy G. Harris
Mrs. Henry Harris
Mr. and Mrs. Christopher S. Hart
Ms. Susan K. Hart
Ms. Marilyn C. Hastings
Mr. and Mrs. Henry Hauptfuhrer
Ms. Gunhild Hazler
Mr. Wesley M. Heilman III
Mr. Stephen B. Heimann and
Ms. Monika Hemmers Heimann
Mrs. Muriel G. Henderson
Mr. Franklin M. Henzel
Mrs. Ellen J. Herr
Eleanor T. and Paul R. Hertel, Jr.
Mr. and Mrs. John C. Heywood
Ms. Catherine R. Higgins
Roger and Dee Hillas
Mr. and Mrs. G. Roger Holt
Mrs. Mary T. Houghton
Mr. and Mrs. Philip C. C. Howse
Mr. and Mrs. Harry E. Hoyt
Mr. and Mrs. Albert Humes
Mr. Thomas M. Hyndman, Jr.
Mr. Frank T. Innes, Jr. and
Ms. Mary Brewster
Ms. Helen S. Johnston
Kylus J. and Diane P. Jones
Mr. William J. D. Jordan
Mrs. Mary Anne D. Justice
Mr. and Mrs. Gordon L. Keen, Jr.
James H. Kelch, Jr.
John C. S. and Miriam P. Kepner
Ms. Carolyn A. Kidder
Ms. Anita M. King
Nancy and Dick Klavans
Mr. and Mrs. Richard N. Koelle
Ms. Barbara C. Kozemchak
Mr. Clifford W. Kozemchak
Mr. David W. Lander

Mr. Earl W. Laney
Mr. and Mrs. Dante J. Lanzetta, Jr.
Mr. and Mrs. David S. Leach
The Rt. Rev. Edward and Kathryn Lee
Ms. Lucy K. Lenhardt and
Mr. Maurice P. Rdesinski
Mrs. Marie J. Lennan
Mr. Charles W. Lentz, Jr.
Mrs. Jacqueline H. Leonard
Howard H.[†] and Maxine M. Lewis
Mr. and Mrs. George F. Lezenby
Dr. and Mrs. Eric L. Lien
Nicholas Lindberg and Jean Hosutt
Dr. and Mrs. Joseph E. Lowry
Mrs. Jane C. MacElree
Dr. Horace MacVaugh III
Mr. and Mrs. Mark B. Maile
Ms. Elaine Markezin and Mr. Ross Veltri
Deborah N. Marsteller[†]
Mr. and Mrs. Walter B. Marvel
Mr. and Mrs. Charles E. Mather III
The Rev. and Mrs. Glenn M. Matis
Mary and Bob McAdoo
Mrs. Marian H. McAllister
Bonnie and Barry McCabe
Dorothy and Bob McCabe
Mr. and Mrs. Brian P. McCleary
Mr. and Mrs. John J. McElroy III
Mr. Donald R. McKenzie
Ms. Elizabeth Ray McLean
Ms. Kristine E. Messner and
Mr. Thomas M. Petro
Mr. and Mrs. Howard L. Meyers
John and Faith Midwood
Mr. Michael Miller
Mr. Michael Martin Mills
Mr. and Mrs. James F. Mitchell III
David and Lyn Montgomery
Mr. and Mrs. John L. Montgomery II
Constance C. Moore
Mrs. J. M. Moran
Mr. Bruce F. Morgan
Mr. H. John Morris
Mr. and Mrs. Percival B. Moser III

Ms. Alice U. Motten
Dr. Richard K. Murray and
Dr. Patricia Bailey
The Rev. William S. Musselman, Jr.[†]
Ms. Virginia E. Musser
Mrs. June G. Neely
Mr. and Mrs. Benjamin R. Neilson
Mr. and Mrs. Charles Nelsen
Mrs. Mary Helen Neuendorffer
Mr. John H. Newhall
Mrs. Jane T. Nyiri
Clifton A. Ogburn, Ph.D.
Ms. Gertrude S. O'Leary
Mr. and Mrs. Bert O'Neill, Jr.
Mr. and Mrs. Wayne D. Parker
Mr. and Mrs. William H. Parsons
Mrs. Margaret Pearson
Annette E. and Charles F. Penniman[†]
Ms. Kimberly Ann Perry
Peter and Virginia Petraglia
Mr. and Mrs. John M. Phinney
Mr. and Mrs. Paul E. Pickering
Mr. and Mrs. Paul V. Plourde
Mr. and Mrs. Robert T. Powers
Mrs. Rose J. Randall
Mrs. Susan D. Ravenscroft
Mrs. Adele J. Ray
Mr. and Mrs. George Reath, Jr.
Mr. and Mrs. Thomas W. Rees
Mrs. Barbara R. Reeves-Cohen
Mr. and Mrs. Frank H. Reichel III
Mr. and Mrs. G. Wayne Renneisen
Mr. and Mrs. J. Barton Riley
Ms. Karen D. Rinaldi
The Rev. and Mrs. David B. Rivers
Mr. and Mrs. Donald H. Roberts, Jr.
Ms. Jane D. Roberts
George and Zara Roberts
Mr. and Mrs. Quintin F. Robinson
Mrs. Elaine M. Rodgers
Miss Marcia J. Rogers
Ms. Barbara S. Rolison
Mr. and Mrs. Gerald B. Rorer
Mr. and Mrs. Herbert T. Rorer

“I support ECS because this forward-looking organization continuously seeks new opportunities to serve, and I am delighted to play even a small part in ECS’ success.”

—NORA ADELMANN

Mr. and Mrs. Roderic H. Ross
Mrs. Catherine Ruhling
Mr. Robertson Rushton
Mr. Peter J. Ryker
Joanne and Richard Schaaf
Patricia[†] and Richard A. Schaphorst
Ms. Susan T. Schindler
Mr. and Mrs. Richard G. Schneider
Buck and Mary Scott
Mr. and Mrs. John J. Scott
Mrs. George W. Scudder, Jr.
Mr. Stiles N. Seay and
Mr. Joseph N. Misuraco
Mrs. Cornelia H. Seidel
Ms. Elisabeth Shellenberger
Dr. Catherine N. Shelton
Mrs. Barbara J. Sibley
Mr. Glenn A. Sibley
The Rev. Dr. Lula Grace M. Smart
Dr. and Mrs. B. Davison Smith, Jr.
Mr. and Mrs. Richard L. Smoot
Craig and Billie Snyder
Robert and Robin Spencer
Mrs. Joly W. Stewart
Ms. Deborah K. Sullivan
Dr. and Mrs. Russell H. Sullivan
Mrs. Barbara B. Supplee
Mr. and Mrs. L. Frederick Sutherland

Miss Helen L. Swain
Mr. Jonathan Sprogell and
Ms. M. Kathryn Taylor
John and Phyllis Taylor
Mr. and Mrs. Darryle Tillman
The Rev. James A. and Gail H. Trimble
Mike and Betsey Useem
Mr. and Mrs. Charles Valutas
Mr. John van Steenwyk
Mr. Edward F. Wagner
The Hon. and Mrs. Thomas D. Watkins
Ms. Melinda J. Weaver
Jenny and Bill Webb
Mrs. Joanne T. Welsh
Kent and Sara Weymouth
Mr. Samuel H. White, Jr.
Dixie G. Wigton
Mr. Ira C. Williams
Mrs. Julie D. Williams
Mr. and Mrs. David R. Wilmerding, Jr.
Mr. and Mrs. John L. Wineland
Mr. and Mrs. Claude E. Wintner
Ms. Caroline P. Wistar
Mr. and Mrs. Charles R. Wood
Elizabeth McGree Wood
Mrs. Spencer D. Wright III
Mrs. Eleanor P. Yodis
Mr. and Mrs. Thomas V. Zug, Jr.

CITY MISSION
LEGACY SOCIETY

City Mission Legacy Society members have included ECS in their legacy plans through their will or trust, a life-income gift, or other deferred gifts.

- Anonymous
- Jeanne H. Adams†
- Nora E. Adelmann
- Laura G. Avery
- Lucy Ann Bangert†
- Dorothea J. Bell
- Mr. and Mrs. Rowland Bennett
- The Rev. and Mrs. Robert H. Betts
- H. Lloyd Beyer III
- Cordelia F. Biddle and H. Stephen Zettler
- Barbara Billings
- John M. Briggs
- Mr. and Mrs. Kurt W. Brunner
- James H. Bryson
- Dr. and Mrs. Henry Cecil
- Thomas G Bernas† and Richard L. Craft
- Mr. and Mrs. Darrell DeMoss
- Charlotte J. Dunmore
- Flora Julia Dunmore
- Eleanor Erskine
- Mary K. Gall†
- Anne Clark N. Godfrey
- Mr. and Mrs. Richard W. Grant
- John P. Gregg, Esq.†
- Mr. and Mrs. David E. Griffith
- Dr. and Mrs. Richard A. Haggard
- Henry K. Hardcastle III
- Adrienne and Eric Hart
- William J. D. Jordan
- Mr. and Mrs. Gordon L. Keen, Jr.

- John C. S. and Miriam P. Kepner
- Carolyn A. Kidder
- Barbara C. Kozemchak
- Clifford W. Kozemchak
- R. Kimball Leiser and Judy Marsh
- Marie J. Lennan
- Deborah N. Marsteller†
- The Rev. and Mrs. Glenn M. Matis
- Joan H. Menocal
- Nina Lander Milton
- Mrs. J. M. Moran
- Virginia E. Musser
- Mary Helen Neuendorffer
- Virginia Norton
- Clifton A. Ogburn, Ph.D.
- The Rev. Judith H. Parichy and Jerry Parichy
- Annette E. and Charles F. Penniman†
- Mr. and Mrs. Richard G. Schneider
- Cornelia H. Seidel
- Mr. and Mrs. Clyde E. Shoop
- Victoria Crago Sicks
- The Rev. and Mrs. Peter W. Sipple
- The Rev. John A. Smart
- Sarah L. O. Smith
- Robert and Robin Spencer
- Barbara B. Supplee
- John and Phyllis Taylor
- The Rev. Elaine E. Thomas and Timothy I. Thomas
- Harriet H. Toland
- The Rev. James A. and Gail H. Trimble
- Margaret E. Van Natta
- Joanne T. Welsh
- Helen W. White
- Dixie G. Wigton
- Mr. and Mrs. John L. Wineland
- Mrs. Spencer D. Wright III†

THE ECS FUND

ECS gratefully acknowledges the support and generosity of all its donors. Following is a list of all individuals who have made a gift of \$125 or more and all contributing foundations, corporations, parishes, community organizations, and government agencies.

BISHOP WHITE CIRCLE
(\$10,000 AND ABOVE)

- Anonymous
- Mr. and Mrs. Richard A. Ashley
- Mr. and Mrs. James W. Beers
- Mr. and Mrs. Thomas L. Bennett
- John G. Chou, Esq. and Teresa A. Wallace
- Edith Dixon
- Charlotte J. Dunmore
- Mr. and Mrs. William B. Eagleson, Jr.
- Mr. and Mrs. Matthew J. Espe
- Hadley Ferguson
- Mr. and Mrs. Earl M. Forte III
- Mr. and Mrs. George W. Gephart, Jr.
- Robert and Mary Gibbons
- Mr. and Mrs. David E. Griffith
- Mr. and Mrs. Roger L. Jones
- Mr. and Mrs. David D. Langfitt
- Jane C. MacElree
- Mr. and Mrs. Peter McCausland
- Mr. and Mrs. Howard L. Meyers
- John and Faith Midwood
- Mrs. J. M. Moran

- Mr. and Mrs. Benjamin R. Neilson
- Mr. and Mrs. J. Barton Riley
- Mr. and Mrs. Herbert T. Rorer
- Mary E. Sales and Edwin F. Strauss
- Naudain I. Sellers
- Kathy High and George Steele
- Mr. and Mrs. L. Frederick Sutherland
- Mike and Betsey Useem
- Julie D. Williams

BISHOPS' SOCIETY
(\$5,000 - \$9,999)

- Anonymous
- Gladys M. Black†
- Mr. and Mrs. Kurt W. Brunner
- Dr. Rosemary Cadigan
- Rodney D. Day III
- Mr. and Mrs. Darrell DeMoss
- Mr. and Mrs. William M. Doran
- Mr. and Mrs. Gordon B. Fowler, Jr.
- Norman P. Harberger
- Mr. and Mrs. Richard Henriques
- Mr. and Mrs. James H. Hill, Jr.
- Mr. and Mrs. Gordon L. Keen, Jr.
- Mr. and Mrs. Steve Lyons
- Susan McEwen-Fial
- John and Emily Pickering
- Rose J. Randall
- Mr. and Mrs. Gerald B. Rorer
- Buck and Mary Scott
- Mr. and Mrs. Richard L. Smoot
- Mr. and Mrs. Thomas H. Suddath, Jr.
- John and Phyllis Taylor
- Edward F. Wagner
- Dixie G. Wigton

(\$2,500 - \$4,999)

- Anonymous
- Mr. and Mrs. John A. Affleck
- Mr. and Mrs. Stephen Bitterman

- Allen D. Black, Esq. and Randy Apgar
- Mr. and Mrs. Richard Boyko
- Mr. and Mrs. James M. Buck III
- Mr. and Mrs. Franklin R. Evans
- Mary B. Geisz and Keith T. Pryor
- Stephen B. Heimann and Monika Hemmers Heimann
- John C. S. and Miriam P. Kepner
- Barbara C. Kozemchak
- The Rt. Rev. Edward and Kathryn Lee
- Marie J. Lennan
- Mr. and Mrs. James P. Linde
- Mr. and Mrs. James K. McAdam
- Mary and Bob McAdoo
- Mr. and Mrs. Frank H. Reichel III
- Mr. and Mrs. Donald H. Roberts, Jr.
- Mr. and Mrs. Richard G. Schneider
- Lea Sherk
- Robert and Robin Spencer
- Mr. and Mrs. John L. Wineland
- Mrs. Spencer D. Wright III

(\$1,000 - \$2,499)

- Anonymous
- Mr. and Mrs. Thomas A. Allen
- The Rev. Kathryn A. Andonian and Dr. Marc H. Andonian
- Richard K. Assoian and Elizabeth Bradburn-Assoian
- Warren and Susan Ayres
- Mr. and Mrs. Ethan F. Ball, Jr.
- Jane A. Barth
- The Rt. Rev. and Mrs. Allen L. Bartlett, Jr.
- Mr. and Mrs. Timothy D. Bauder
- Patricia Beck
- Cordelia F. Biddle and H. Stephen Zettler
- Barbara Billings
- Jean G. Bodine
- William S. Bireley and Lisa Brunner-Bireley
- Mr. and Mrs. William C. Buck
- Mark F. Burns
- Dr. and Mrs. Henry Cecil

- William E. Christman III
- Mr. and Mrs. Isaac H. Clothier IV
- Mr. and Mrs. Tristram C. Colket, Jr.
- Thomas G. Bernas† and Richard L. Craft
- Mr. and Mrs. Larry E. Dahl
- The Rev. Richard J. Datos-Robyn and Peter S. Datos-Robyn
- Robert and Constance Dee
- Richard C. DeKalb
- Maryjo Delaney
- Ineke M. Dikland
- Dr. and Mrs. L. Henry Edmunds, Jr.
- Mr. and Mrs. Richard Englebach
- Mr. and Mrs. Wilmer R. Evans
- Anna and Tom Gerrity
- Gay P. Gervin
- Virginia P. Goodrich
- Mrs. Henry Harris
- Mr. and Mrs. Richard J. Henry
- Roger and Dee Hillas
- Donald R. Holt
- Mr. and Mrs. Philip C. C. Howse
- Mr. and Mrs. Daniel L. Hutchinson
- Christine James
- James H. Kelch, Jr.
- Nancy and Dick Klavans
- Ronald T. Kuehn
- Earl W. Laney
- H. Gordon E. Leggett, Jr. and Madeline E. Miller
- Mr. and Mrs. Robert Legnini
- Mrs. Jacqueline H. Leonard
- Howard H.† and Maxine M. Lewis
- Dr. and Mrs. Eric L. Lien
- Nicholas Lindberg and Jean Hosutt
- Marjorie Little and Dr. Richard Dupuis, Jr.
- Mr. and Mrs. Wyatt MacGaffey
- Mr. and Mrs. Walter B. Marvel
- Mr. and Mrs. Charles E. Mather III
- Bonnie and Barry McCabe
- Mrs. William L. McLean III
- Mr. and Mrs. Robert McQuiston
- Kristine E. Messner and Thomas M. Petro

“ECS provides support, solace, skills, and hope ... I’m honored and proud to be able help ECS’ clients through my donations. Together, we can change the world—one person at a time.”

—CORDELIA BIDDLE

The Mark and Kathryn Miani Family
Mr. and Mrs. Geoffrey Middleton
Ronald E. Midwood and Elizabeth Olmstead
Dr. Sky Monarch
David and Lyn Montgomery
H. John Morris
Dr. Richard K. Murray and Dr. Patricia Bailey
Mr. and Mrs. Bert O'Neill, Jr.
Mr. and Mrs. William H. Parsons
Mr. and Mrs. Lanny R. Patten
The Rev. Nicholas B. Phelps
Mr. and Mrs. Phelps T. Riley
Dr. and Mrs. Andrew B. Roberts
Mr. and Mrs. William K. Roberts
Mr. and Mrs. Charles A. Robertson, Jr.
Margot Rowley and Chuck Gopta
Joanne and Richard Schaaf
Mr. and Mrs. David C. Scharre
Mr. and Mrs. David M. Senior
Victoria Crago Sicks
Abbey Smith
Mr. and Mrs. Barry Smithies

Mr. and Mrs. Robert Staas
H. Lynn Starr, M.D.
The Very Rev. Judith A. Sullivan
Dr. and Mrs. Russell H. Sullivan
Joy H. Tartar
Jonathan Sprogell and M. Kathryn Taylor
The Rev. James A. and Gail H. Trimble
Susan C. Van Allen
Mr. and Mrs. Richard Warner
Joanne T. Welsh
Mr. and Mrs. Harold J. Whartnaby
Helen W. White
Mr. and Mrs. David R. Wilmerding, Jr.
Leni G. Windle
Mr. and Mrs. Claude E. Wintner
Dennis Womack-Kalla
Elizabeth McGree Wood
The Rev. and Mrs. William H. Wood III
Mr. and Mrs. Charles Woodward II
Josephine F. Zelov

ECS STEWARDS
(\$500 - \$999)

Anonymous
Evelyn C. Aaron
Nora E. Adelmann
Mr. and Mrs. George M. Ahrens
Anne M. Barnett
Harvey and Nathalie Bartle
H. Lloyd Beyer III
Edward and Beverly Black
Martin M. Bodtmann
Mr. and Mrs. Charles Brinker
The Rev. and Mrs. Arthur F. Brunner
The Rev. Kenneth Bullock and Dr. Kathryn R. Bullock
John and Marcie Burns
The Rev. Mariclaire Partee Carlsen
The Rev. Elizabeth W. Colton
Betsey and Ward Corkran
Mr. and Mrs. William A. Crawford
Lindsay S. Crosby
Judith Croxton Stevens
Mr. and Mrs. Christopher S. D'Angelo
Gene and Charles Dilks
Elisabeth L. Doolan
Frederick W. Dougherty
Dr. and Mrs. Thomas Drake
Karen Y. Duffy
Mr. and Mrs. T. Ritson Ferguson
Mr. and Mrs. P. Bruce Ferguson
James L. Fitzwater
Don and Betty Graff
Emilio J.† and Carole Haas Gravagno
Dr. and Mrs. Richard A. Haggard
Nancy G. Harris
Jeffrey and Nancy Harrison
Mr. and Mrs. Christopher S. Hart
Kevin J. Harty
Jane M. Hastings
Marilyn C. Hastings
Mr. and Mrs. George G. Hawke
Sharon L. Haynie

Mr. and Mrs. John C. Heywood
Catherine R. Higgins
Nancy Hildreth
Christian A. Holland
Carl Holstrom and Mary B. Kineke
Mr. and Mrs. Bruce A. Horne
Frank T. Innes, Jr. and Mary Brewster
Annabelle P. Irey
Sally H. Johnson
William P. Johnson
Mr. and Mrs. David S. Leach
Mr. and Mrs. Robert H. Lee, Jr.
Mr. and Mrs. Alan Levy
Dr. and Mrs. Philip G. Lewis
Mr. and Mrs. George F. Lezenby
Richard R. Major
Janice E. May
Molly McAndrew and Kenneth Pendergast
Derrick McBride
Dorothy and Bob McCabe
Mr. and Mrs. John J. McElroy III
Pete and Bonnie Miller
Michael Martin Mills
Nina Lander Milton
Mr. and Mrs. Allen J. Model
Mr. and Mrs. John L. Montgomery II
Bruce F. Morgan
Jane T. Nyiri
Mr. and Mrs. Wayne D. Parker
John B. Paysinger
Kimberly Ann Perry
Mr. and Mrs. John Pregmon
Mr. and Mrs. Donald B. Pritchard, Jr.
Eric and Luisa Rabe
Jim K. Ragoonanan
Missy and John Randolph
Susan D. Ravenscroft
Zachary D. Redlitz
Mr. and Mrs. Thomas W. Rees
Barbara R. Reeves-Cohen
Jane D. Roberts
Mr. and Mrs. Roderic H. Ross
Catherine Ruhling

Nicholas Russo
David and Deborah Schaaf
James B. Schaefer
Susan T. Schindler
Karen M. Schoelles
James J. Scott
Mrs. George W. Scudder, Jr.
Cornelia H. Seidel
The Rev. Dr. Lula Grace M. Smart
Craig and Billie Snyder
Stewart and Sidney Spahr
Betty M. Stagg and John Nordling
Mr. and Mrs. Harold P. Starr
David A.† and Marilou P. Stewart
Pamela Thaxter
The Rev. and Mrs. Richard L. Ullman
The Hon. and Mrs. Thomas D. Watkins
Jenny and Bill Webb
Mr. and Mrs. Robert B. White, Jr.
Dr. and Mrs. L. Douglas Wilkerson
Randy and Carol Williamson
Mr. and Mrs. Peter Wilmerding
Mr. and Mrs. Thomas R. Wilson
Mr. and Mrs. Robert J. Wise, Jr.
Mr. and Mrs. Thomas V. Zug, Jr.

(\$250 - \$499)

Anonymous
Mrs. Duffield Ashmead III
Vance and Elna Bachman
The Rev. Carolyn Baird and Robert Baird
The Rev. Sara C. Batson and James G. Brunnquell
Cheryl J. Bayard
Joan B. Bedell
Mr. and Mrs. Jack R. Belsinger, Jr.
Mr. and Mrs. Rowland Bennett
Jeanne L. Bernosky
Mr. and Mrs. Donald Besecker
Edward G. Boehne
Mr. and Mrs. James H. Bromley
Elizabeth S. Browne

The Rev. Judith M. M. Buck Glenn and Gary Glenn
Dr. and Mrs. Jerome G. Buescher
Edgar C. Seely III and Lorna Campbell-Seely
Mary Ross Carey
Karen L. Carroll
Sheila Carson
Mr. and Mrs. Barry T. Carter
Michael P. Christman
Carol G. Church and Gary Wilmone
Jean M. Cortner
Mr. and Mrs. Dennis Cunningham
Barclay Cunningham
Mr. and Mrs. Richard Dahlager
Mrs. F. J. Dallett
Mr. and Mrs. John A. Davis, Jr.
William M. Davison, 4th
Mr. and Mrs. Robert W. Denious
Thomas Dolan IV
Deborah A. Dooling
Mr. and Mrs. Donald F. Duclow
Mr. and Mrs. Edward S. Duncombe
Caroline A. Dunleavy
Mr. and Mrs. John J. Ehlinger, Jr.
The Rev. Amanda B. Eiman and The Rev. Christopher M. Bishop
Margery B. H. English
Mr. and Mrs. Barrett E. Farnham, Jr.
Darryl J. Ford, Ph.D. and Dr. Gail T. Sullivan
Sandra M. Fowler, MD
Edlyne Garnier
Giby Garnier
Jane L. Garrison
Jerene V. Good
Gregory Gosfield
William A. Graham IV
Dr. and Mrs. John P. Grigger
Mr. and Mrs. Henry F. Guckes
Katherine S. Hall
Mr. and Mrs. Delroy M. Harrison
Gunhild Hazler
Mr. and Mrs. Thomas H. Hipp

Terry N. Hirshorn
Mr. and Mrs. Barry J. Hitchen
The Rev. Dr. and
Mrs. Melford E. Holland, Jr.
Adele Holmes and Elaine Holmes
Mr. and Mrs. James R. Holt, Jr.
Thomas M. Hyndman, Jr.
Mr. and Mrs. Douglas W. Jones
Kylus J. and Diane P. Jones
Mr. and Mrs. Michael Kihn
Mr. and Mrs. Fred Koberna
Mr. and Mrs. Peter Kreek
Frederick F. Lansill
Mr. and Mrs. Bevan Lawson
Lucy K. Lenhardt and
Maurice P. Rdesinski
Dr. and Mrs. Joseph E. Lowry
George Luskus, Esq. and Marsha J. Blake
Alexander MacLachlan
Mr. and Mrs. Burton A. MacLean, Jr.
Elaine Markezin and Ross Veltri
Carolyn and Robert McGrory
Jane E. McKinney
Dr. and Mrs. Frank J. Meloni
Helen S. Montgomery
Constance C. Moore
John J. Mroz
Virginia E. Musser
Eric A. Muth
Mary Helen Neuendorffer
David J. Nice and Marian W. Wentworth
Clifton A. Ogburn, Ph.D.
Mary Ottaviano
Mr. and Mrs. B. Craig Owens
Mr. and Mrs. Gardiner P. Pearson
Mr. and Mrs. John M. Phinney
Mr. and Mrs. Robert T. Powers
Sarah and Philip Price, Jr.
Mr. and Mrs. Andrew C. Reindel
Karen D. Rinaldi
The Rev. Barbara B. Rivers
The Rev. and Mrs. David B. Rivers
Joan C. Roberts

Philmore Robertson, Jr. and
Kathryn J. Caywood
Corona Robinson
Elaine M. Rodgers
Barbara S. Rolison
Mr. and Mrs. Peter Ross
Myrtle and Hugh Ryan
Richard and Lee Schultz
Audrey L. Scott
Peter and Lucy Bell Sellers
Glenn A. Sibley
Chuck and Ruth Silver
Andrea N. Simpson
Dr. and Mrs. B. Davison Smith, Jr.
Girard T. Smith, Jr.
The Rev. Robert C. Smith and
Lorene E. Carey
Tad Sperry and Ellen Harvey
Michael Stairs
Joly W. Stewart
Mr. and Mrs. David B. Stone
Neville E. Strumpf
Deborah K. Sullivan
Mrs. Ardith L. Talbott
Elizabeth D. Ten Have
Pamela D. Thomas
Mr. and Mrs. Thomas F. Thomas, Jr.
Mr. and Mrs. Darryle Tillman
Geraldine S. Tom
Mr. and Mrs. Torence J. Trout
Ross and Mary Lou Unruh
Renee Ward
Dr. and Mrs. Andrew C. Wechsler
Robert Willenbucher
Alberta F. Williams
Caroline P. Wistar
Mr. and Mrs. Eric Wohlforth
Mr. and Mrs. Charles R. Wood
Catherine A. Worrall
Gerard L. and Elizabeth T. Yarnall

(\$125 - \$249)

Anonymous
Mr. and Mrs. John A. Abrams
Mr. and Mrs. Samuel C. Albright
James and Sandra Arnold
Mr. and Mrs. Nolan N. Atkinson, Jr.
Diana Bateman
Barbara W. Baumgartner
The Rev. Judith L. T. Beck
Roy E. Bernat
Sandra M. Berwind
Charlotte C. Betancourt
The Rev. and Mrs. Robert H. Betts
Mr. and Mrs. Paul M. Bingaman
Burt and Cathy Blackburn
Mr. and Mrs. Charles J. Bloom
Gail P. Boorse
Mr. and Mrs. Albert C. Boris III
The Rt. Rev. Frederick H.† and
Barbara S. Borsch
Helen R. Bosley
Mr. and Mrs. Martin J. Brill
The Rev. C. Reed Brinkman and
Paula J. Hansen
Melissa Buckingham
Peter R. Burgum
Carol W. Butcher
Chris and Kim Campbell
The Rev. and Mrs. David A. Canan
Mr. and Mrs. Michael J. Catania
Joan Cesare
Michael and Jean Churchman
Angela C. Cimino
Mr. and Mrs. Peter O. Clauss
Charles Clayton, Jr.
Mr. and Mrs. Harold T. Commons
Elisabeth Crago
Monica M. Cuddy
Mr. and Mrs. Michael D'Antonio
John and Helen Davies
Mr. and Mrs. Mark A. Davis
Patricia M. Dean

Virginia T. Dean
Mr. and Mrs. Dominick DeCaprio
Ann C. Deinhardt and David F. Jury
Merrill and Suzanne Detweiler
Frederick N. Dewey
Mr. and Mrs. William H. Eyre, Jr.
Mr. and Mrs. James G. Fannon
Mr. and Mrs. Edward Finn
Mr. and Mrs. Carl H. Fridy
Patricia A. Fusco
Glenna F. Geiger
Nancy Gellman
Mr. and Mrs. Thomas Gelnett
Laura Graham
Barbara P. Groshens
Allison Grossman
Rod and Linda Gunn
Carol Gwatkin
Carolyn R. Hale
Mr. and Mrs. J Bruce Hamilton
Carol Hart Harris
Mr. and Mrs. Allan W. Hasbrouck
Ellen J. Herr
Eleanor T. and Paul R. Hertel, Jr.
Mr. and Mrs. Robert B. Hobbs, Jr.
Antoinette C. Hoffacker
Philip A. Holmes
Kevin Hook
Mary R. Hopkins
Mary Alice Horner
Mary T. Houghton
Mr. and Mrs. Patrick M. Houston
Mr. and Mrs. Harry E. Hoyt
Karen Jackson Trapp
Sheila Jamison-Schwartz
William J. D. Jordan
Mary Anne D. Justice
Mr. and Mrs. Morris C. Kellett
The Rev. Barbara A. Kelley
Carolyn A. Kidder
Mr. and Mrs. James S. Kiel, Jr.
Barbara C. Kimberly
Mr. and Mrs. John M. Klarman

Carol Anne Kline
Carol L. LaBelle
Francis N. LaMay
Benjamin E. Leiby and
Andrew D. Gutknecht
Pamela W. Leighton
Charles W. Lentz, Jr.
Mr. and Mrs. Roger B. Lind
Mr. and Mrs. Rafael I. Lissack
Mr. and Mrs. Lance Lorch
Mr. and Mrs. William E. Lutz
Leann T. Magakis
Mr. and Mrs. Christopher J. Manogue
Mr. and Mrs. Andrew V. Masterman
Mr. and Mrs. Brian P. McCleary
The Rev. Malcolm McGuire
Elizabeth Ray McLean
Joan H. Menocal
Patricia A. Mingey
Barbara L. Monaghan
Honour H. Moore
The Rev. David Morris
Alice U. Motten
Kelly A. Moylan
Myrtle J. Musetti

Mr. and Mrs. John P. Nee
Mr. and Mrs. Charles Nelsen
The Rev. and Mrs. L. Stephen Nelson, Jr.
John H. Newhall
Dr. John J. Newhouse
Mr. and Mrs. Ryan S. Northington
Margaret M. O'Brien
Gertrude S. O'Leary
Olumide A. Onafowora
Mr. and Mrs. Thomas B. O'Rourke
Despina F. Page
Ralph E. Painter, Jr.
Cliff and Ellen Pemberton
Carol A. Pindar
Mr. and Mrs. Richard Pinola
Mr. and Mrs. Eric P. Plarre
Mr. and Mrs. Paul V. Plourde
Barbara Porter
Mr. and Mrs. Roger Puente
Mr. and Mrs. Peter D. Quinn
Mr. and Mrs. George Reath, Jr.
Margaret B. Rhoads
Mrs. F. Lee Richards
Louisa C. Ridgway
The Rev. Dr. J. Robin Robb

“The very talented and dedicated ECS staff understands the depth of poverty in Philadelphia and labors daily to provide badly needed resources and skills, as well as hope.”

—NATHALIE A. BARTLE

George and Zara Roberts
Marcia J. Rogers
Mr. and Mrs. Herbert Rolland
Mr. and Mrs. Frederick F. Rollo III
Mr. and Mrs. Mike Ryan
Peter J. Ryker
Brandon Sargent
Dorothy M. Schmidt
Denis O. Hazam' and
Frances M. Scullian-Hazam
The Rev. Neale A. Secor
William H. Sell, Jr.
Pam and Frank Serra
Judith A. Shahriari
Mr. and Mrs. Edwin S. Sheffield
Dr. Catherine N. Shelton
Mr. and Mrs. John Smyth, Sr.
Dr. and Mrs. Michael A. Sostok
Susan W. Spencer
The Rev. and Mrs. E. Kyle St. Claire, Jr.
Mr. and Mrs. Kevin R. Steele
Alfred W. Stevens
Barbara B. Supplee
Helen L. Swain
Georgene Y. Taylor
Alester E. Teagle
Joan S. Thomas
Barbara K. Tobin
Mr. and Mrs. James E. Van Merkensteijn
Mr. and Mrs. Wilson C. Vandiver
Joan and Philip Wallick
Helen D. Warner
Paula D. West
Mr. and Mrs. Warwick S. Wheeler
Elaine B. Whitman
Rodney and Patricia Whitmire
Mr. and Mrs. William M. Wolf
The Rt. Rev. James E. Wynn

RECURRING GIVING CIRCLE

The Recurring Giving Circle is comprised of those individuals who have established a continuous annual commitment to ECS.

Anonymous
The Rev. Kathryn A. Andonian and Dr. Marc H. Andonian
Luisa B. Andrews
Belinda G. Ash
John C. Auman
Mr. and Mrs. Rowland Bennett
The Rev. Judith M. M. Buck Glenn and Gary Glenn
Dr. and Mrs. Jerome G. Buescher
The Rev. Mariclaire Partee Carlsen
Mr. and Mrs. Joseph D. Ceccoli
The Rev. Elizabeth W. Colton
Mr. and Mrs. Albert M. Comly, Jr.
Elisabeth Crago
Mr. and Mrs. Wilmer R. Evans
Kathy Ford
Mr. and Mrs. Kenneth Frank
Edlyne Garnier
Giby Garnier
Mary B. Geisz and Keith T. Pryor
Jerene V. Good
Don and Betty Graff
Carol Gwatkin
Kevin J. Harty
Mr. and Mrs. Thomas H. Hipp
Mr. and Mrs. Robert B. Hobbs, Jr.
The Rev. Dr. and Mrs. Melford E. Holland, Jr.
Kevin Hook
Mr. and Mrs. Patrick M. Houston
Sally H. Johnson
William P. Johnson
Timothy C. Jost and Rosemary A. Reshetar

Joan E. Kelly
William M. Keyser
Carolyn A. Kidder
Mr. and Mrs. Michael Kihn
Cheryl B. Kuchler and Mr. Charles A. Haughton
Reid S. McCarthy and Caroline Oakes
Kristine E. Messner and Thomas M. Petro
Mr. and Mrs. Charles Nelsen
Alice and John Randolph
Karen D. Rinaldi
Catherine Ruhling
The Rev. Dr. Lula Grace M. Smart
Mr. and Mrs. Barry Smithies
Mr. and Mrs. David B. Stone
Dr. and Mrs. Russell H. Sullivan
Ardith L. Talbott
Georgene Y. Taylor
Mr. and Mrs. Thomas F. Thomas, Jr.
Barbara K. Tobin
Marvin M. Walters
Randy and Carol Williamson

BEQUESTS

Estate of Lucy Ann Bangert
Estate of Robert S. Browne
Estate of Marjorie G. Davison
Estate of Mary K. Gall
Estate of John P. Gregg, Esq.
Estate of William H. Hammonds
Estate of Elizabeth H. Lippincott
Estate of Deborah N. Marsteller
Estate of John F. Page
Estate of The Rev. Charles F. and Annette E. Penniman
Estate of Richard S. Ravenscroft
Estate of Pauline L. Stitzinger
Estate of Eugene G. Thompson

MEMORIAL GIFTS

In Memory of Jeanne H. Adams
Carol Frey
In Memory of Mr. and Mrs. Charles Bangert, Jr.
Mckee Family
Carol Gwatkin
In Memory of Bruce C. Beck
Patricia Beck
In Memory of Thomas L. Bernas
Hermine I. Cherin
Jeffrey L. Craft
The Rev. James A. and Gail H. Trimble
In Memory of The Rev. Stephen R. Billings
Barbara Billings
Barbara P. Groshens
In Memory of Patricia J. Boehne, Ph.D.
Edward G. Boehne
In Memory of Judy Brown
Anonymous
In Memory of Carl Merritt Buchholz
John B. Paysinger
In Memory of Helen Lee Butler
Vivian D. Ray
In Memory of Rev. Harry L. Casey
Mr. and Mrs. Robert E. Briegel
In Memory of Lawrence R. Cohen
Barbara R. Reeves-Cohen
In Memory of Geraldine Colsher
Gerald Colsher
In Memory of David Cox
Anonymous
In Memory of Mavis Davis
Barbara H. Wilson
In Memory of Doris O. DeKalb
Richard C. DeKalb
In Memory of Elizabeth G. Dolan
Thomas Dolan IV
In Memory of Catherine D. Dolbow
Kenneth C. Dolbow
In Memory of John Dunn
Marilee C. Dunn
In Memory of Kirby M. Eisenhart
Elizabeth G. Atkinson
Marie E. Douts
Norm Shropshire
Christina Stingle
Elizabeth White
In Memory of James T. English
Margery B. H. English
In Memory of Gail Fowler
Sandra M. Fowler, MD
In Memory of Nina Marie Gideon
Melissa Buckingham
In Memory of Mary S. Girling
The Fletcher Family
In Memory of Ruth C. Grobes
Alison R. Richardson
In Memory of Susan E. Hackman
Herman R. Hackman, Jr.
In Memory of Margaret Hammond
Charles E. Cloud
In Memory of Jean B. Herman
Ralph E. Herman
In Memory of Joseph and Betsy Hewitt
Tracey A. Hewitt
In Memory of Ghretta Scott Hinton
Ola S. Bass
In Memory of Byron and Virginia Holmes
Adele Holmes and Elaine Holmes
In Memory of Craig R. Holt, Our Son
Mr. and Mrs. G. Roger Holt
In Memory of John Hopkins, Jr.
Mary R. Hopkins
In Memory of Howard and Dorothy Hoppock
Karen Hoppock and Charles Baigis
In Memory of Arthur F. Trapp, Jr.
Karen Jackson Trapp
In Memory of Katherine R. Kriebel
Mr. and Mrs. James E. Van Merkensteijn
In Memory of The Rev. Mary E. Laney
Mr. and Mrs. Richard L. Smoot
In Memory of Howard H. Lewis
Maxine M. Lewis
In Memory of Elizabeth Hanger
Lippincott for the Hurdlers Fund
Mr. and Mrs. Benjamin M. Baldridge
R. Jeanette Cord
Harry, Sandy, and Susie Cox
Kathy R. Farren
Hadley and J. Dickson Ferguson
Sudie C. Hanger
Mr. and Mrs. David H. Hilton, Jr.
Mr. and Mrs. William S. Hitchings IV
Mr. and Mrs. Roger L. Jones
Jones-Lippincott Family Foundation
Ellen E. Lea
Patricia K. Masters
Louise Melby
Moms Demand Action for Gun Sense in America, Philadelphia
Sarah H. Norris

The Opila Family Trust
Pennsylvania Trust
Barbara Porter
Mr. and Mrs. William C. Porter
Joan S. Root
Mr. and Mrs. Scott C. Satterfield
Mr. and Mrs. Edwin S. Sheffield
Rebecca Sheppard
Richard A. Sheppard
Mr. and Mrs. Baird Standish
Barbara Wells
Sandra B. Worthington
Kathleen Young
In Memory of Fathers Thomas Logan, Sr. and Jr.
Charlene M. Wiltshire
In Memory of Emilie M. MacFarland
Ronald E. Midwood and Elizabeth Olmstead
In Memory of Duffey McWilliams Hopkins
Anonymous
In Memory of The Rev. Rudolph A. Moore
Honour H. Moore
In Memory of Claudia Murphy
The Rev. and Mrs. Arthur F. Brunner
In Memory of Richard W. Palmer
Nancy B. Davis
Hannah Henderson
Stephanie S. Hooper and Chester D. Hooper
In Memory of Richard W. Palmer
Elisa Lewis
Maxine M. Lewis
Mr. and Mrs. Charles E. Mather III
Janet Paulsen
The Philadelphia Belt Line Railroad Company
Albert Raman, Esq.
Rose J. Randall
In Memory of Annette E. Penniman
Richard T. Everett
Lynda M. Kinnier
Karen L. Schutt and Virginia Greeley
In Memory of The Rev. Charles F. Penniman, Jr.
Sharon Dooley
Richard T. Everett
Panna Flower
Nancy E. Garthwaite
Shirley Gracie
Mary Anne Hunter
Jane Johnston
Mary C. Lefever
Marie J. Lennan
Karen L. Schutt and Virginia Greeley
Neville E. Strumpf

“I learn so much from the people I visit. Their lives are fascinating, and I am lucky to have the opportunity to hear their stories.”

—MEGAN MILLER

In Memory of C. Brewster Rhoads
Mr. and Mrs. George Boyd V

In Memory of The Rev. F. Lee Richards
Mrs. F. Lee Richards

In Memory of E. Idelle Rogenmuser
Charlotte L. Rogenmuser

In Memory of Rose E. Rogers
Anonymous

In Memory of Patricia Schaphorst
Ada Bello
Mr. and Mrs. William D. Carr
The Board of Directors and Management of Cathedral Village
Mr. and Mrs. W. Gregory Coleman
Gail M. Harp
Caroline R. Kemmerer
Mr. and Mrs. John Olson
Mr. and Mrs. Edwin S. Sheffield
Mr. and Mrs. Walter Walkenhorst
Mr. and Mrs. Roger Youman

In Memory of The Rev. Paulette Schiff
Janice E. May

In Memory of Denis Hazam
Frances M. Scullian-Hazam

In Memory of Ann Smyth
Mr. and Mrs. John Smyth, Sr.

In Memory of James David Stobaugh
Kevin J. Harty

In Memory of Martha R. Teagle
Alester E. Teagle

In Memory of The Rev. Virginia C. Thomas
Ruth B. Becker

In Memory of Amy Cramp Torrey
Bob C. Ligget

In Memory of Charles and Elaine Trentalange
Leann T. Magakis

In Memory of Betts Ulmer
Philip A. Holmes

In Memory of Mayme J. Washington
Carol W. Butcher
Mr. and Mrs. Darryle Tillman

In Memory of Mamie E. Wiggins
Jacqueline R. Jefferson
St. George St. Barnabas Church

In Memory of Tom Williams
Mr. and Mrs. James K. McAdam

In Memory of Sara S. Wolf
Mr. and Mrs. William M. Wolf

In Memory of Frank G. Wren, Jr
Anonymous

In Memory of Lydia W.S. Wright
Anonymous

In Memory of Alice C. Yates
Karen Duffy

In Memory of Doris S. Yearsley
Barbara L. Monaghan

HONORARY GIFTS

In Honor of Jacqueline Anderson and Michael Shockey
The Rev. Robert Tate and Ms. Ann Greene

In Honor of The Rev. Arthur and Joan Brunner
Mr. and Mrs. Kurt W. Brunner
William S. Bireley and
Lisa Brunner-Bireley

In Honor of The Brunner Family
Mr. and Mrs. John S. McCutcheon

In Honor of Carol and Kurt Brunner
Mr. and Mrs. Charles A. Robertson, Jr.

In Honor of Barbara Cox
Anonymous

In Honor of Julia DeMoss
Eric and Luisa Rabe

In Honor of Madeline DiDio, my mother, who always gives herself to others
Renee Ward

In Honor of Sharon Dooley
Anne Graham

In Honor of William C. Dornan
Dr. and Mrs. Michael A. Sostok

In Honor of Dr. Claire M. Gober
Ryan Gober and Cynthia Bourgeois

In Honor of David E. Griffith
Mr. and Mrs. George W. Gephart, Jr.
St. Paul's Episcopal Church
Helen W. White

In Honor of Isabel Hamill's 90th Birthday
Mercedes A. Sadler

In Honor of Frances and Howard Kellogg
Maile S. Armstrong

In Honor of Marilyn Knox
Mr. and Mrs. George M. Ahrens
Mary Alice Horner

In Honor of Henry Kwiecinski and Caroline West
Mr. and Mrs. Richard Dahlager

In Honor of Diane Lynn
Pearl L. Lynn

In Honor of Marjorie L. McCausland
Mr. and Mrs. Norman M. McCausland

In Honor of John and Barbara McCutcheon
Mr. and Mrs. Kurt W. Brunner

In Honor of Karl Miller
Mr. and Mrs. Robert L. Schaffer

In Honor of Jeff and Dianne Moretzsohn
Glenna F. Geiger

In Honor of Nancy Munyan
Frances Kelly

In Honor of John Pickering
Eric and Luisa Rabe

In Honor of Charles and Tricia Robertson
Mr. and Mrs. Kurt W. Brunner

In Honor of Allison Schreffler
Rosalie Osberg

In Honor of Victoria Crago Sicks
Elisabeth Crago
The Rev. Robert Tate and Ms. Ann Greene

In Honor of Holly K. Srogota
Mr. and Mrs. George M. Ahrens

In Honor of Barbara and Fred Sutherland
Mr. and Mrs. Hugh J. Aikens, Jr.

In Honor of Stefano Topalis
Anonymous

In Honor of The Rev. James A. and Mrs. Gail H. Trimble
Martin P. Trimble and Dr. Colette De Marneffe

In Honor of the Musicians of the Trinity Church, Buckingham
Dr. Regina K. Gordon

In Honor of Joanna Wagstaff Kline
The Rev. Andrew and Dr. Kathleen Kline

In Honor of Margaret Watson and Michael Overbey
Todd B. Brown

In Honor of Mary G. West
Mr. and Mrs. Richard Dahlager

In Honor of Ginny and Carter Williams
Mr. and Mrs. Wilson C. Vandiver

In Honor of Julie Williams
Mr. and Mrs. Robert McQuiston

In Honor of Rev. Marek Zabriskie
Pamela W. Leighton

PARISH SUPPORT

All Hallows' Church

Christ Church, Ithan

Christ Church, Ridley Park

Church of Our Saviour, Jenkintown

Church of St. James, Kingsessing

Church of St. Luke and the Epiphany

Church of St. Martin-in-the-Fields, Chestnut Hill

Church of the Holy Apostles and the Mediator

Church of the Holy Trinity, Rittenhouse Square

Church of the Holy Trinity, West Chester

Church of the Incarnation, Morrisville

Church of the Redeemer, Bryn Mawr

Gloria Dei Church

Memorial Church of the Good Shepherd, East Falls

St. Alban's, Newtown Square

St. Andrew's Church, West Vincent

St. Christopher's Church, Gladwyne

St. David's Church, Radnor

St. George St. Barnabas Church

St. John's Church, Lower Merion

St. Luke's Church, Germantown

St. Luke's Church, Newtown

St. Mary's Church, Ardmore

St. Mary's Church, Cathedral Road

St. Mary's Church, Wayne

St. Paul's Church, Chestnut Hill

St. Paul's Church, Oaks

St. Peter's Church, Glenside

St. Peter's Church, Philadelphia

St. Peter's Church, Phoenixville

St. Thomas' Church, Whitemarsh

St. Timothy's Church, Roxborough

Trinity Church, Coatesville

Trinity Church, Gulph Mills

Trinity Church, Oxford

Trinity Church, Solebury

Trinity Church, Swarthmore

Trinity Memorial Church

Washington Memorial Chapel

FOUNDATION, GOVERNMENT, AND OTHER ORGANIZATIONS

Anonymous

The 1830 Family Foundation

AIG Private Client Group/US Consumer Lines

Alliance for Strong Families and Communities

AmazonSmile Foundation

Effie May Becket Fund

The Benevity Community Impact Fund

Brandywine Senior Living at Haverford Estates

Brown Brothers Harriman

Bryn Mawr Hospital Foundation

Bryn Mawr Presbyterian Church

Buck Family Fund

Alpin J. and Alpin W. Cameron Memorial Fund

Cathedral Village

The Chatham Foundation

Children and Families Fund

City Line Chiropractic P.C.

The Cressida Fund

Doran Family Foundation

The Elsevier Foundation

Episcopal Diocese of Pennsylvania

Falconhead Foundation

Fidelity Brokerage Services LLC

First Presbyterian Church

Gartner, Inc.

Genesis Asset Protection, Inc.

Germeshausen Foundation Inc.

Lillian Gest Memorial Fund

Glenmede Investment and Wealth Management

Griffith Family Foundation

Griswold Home Care

HACE Management Company

Health Promotion Council

The Henriques Family Fund

Independence Foundation

Jones-Lippincott Family Foundation

Patricia Kind Family Foundation

KPMG LLP

Jane Ann Krause Trust

The Margaret and David Langfitt Foundation

Larking Hill Foundation

Leo Model Foundation

The Christopher Ludwick Foundation

MacElree Family Foundation

The McCausland Foundation

The McEwen Family Scholarship Fund at Modern Group Ltd.

The McEwen-Fial Family Foundation

The McLean Contributionship

Mondrian Investment Partners, Inc.

National Board of Medical Examiners

Network for Good

Nonprofit Repositioning Fund

The Opila Family Trust

Our Mother of Good Counsel

The William Penn Foundation

Penn, Schoen and Berland Assoc. Inc.

Pennsylvania Department of Education
Pennsylvania Trust
The Pew Charitable Trusts
The Philadelphia Belt Line Railroad Company
Philadelphia Department of Human Services
Philadelphia Office of Homeless Services
The Leo & Peggy Pierce Family Foundation
Public Health Management Corporation
Philadelphia Youth Network
The Rorer Foundation, Inc.
Sales-Stauss Charitable Fund
Sara Campbell, Ltd
Sellers Family Fund
Joseph Kennard Skilling Trust
Society of Colonial Wars in The Commonwealth of Pennsylvania
Isabel Spackman Trust
St Paul's Episcopal Church
The Stratton Foundation
Joy H. Tartar Charitable Fund
Team First Book Philadelphia

United Health Group
United States Department of Housing and Urban Development
United Way of Greater Philadelphia and Southern New Jersey
Joan C. Wells Fund of Philadelphia Foundation
Eric & Caroline Wohlforth Living Trust
Quita Woodward Foundation Trust
Worthington Law Group

CORPORATIONS

Anonymous
Aetna
Aramark
BNY Mellon Community Partnership - Employees Funds
Employees Community Fund of The Boeing Company
Citizen Bank (Citizens Helping Citizens Colleague Giving Campaign)

Costco Wholesale Corporation
Deloitte Employee Campaign
Dupont Employee Campaign
Exelon Corporation Employee Campaign
Fidelity Charitable Gift Fund
Honeywell Hometown Solutions Employee Campaign
Johnson & Johnson Family of Companies Employee Campaign
Merck Foundation
Morgan Stanley Smith Barney Global Impact Funding Trust, Inc.
Nationwide Employee Campaign
Pfizer, Inc.
Schwab Charitable Fund
T. Rowe Price
TD Bank Employee Campaign
Vanguard Charitable Endowment Program
Vanguard Community Fund Employee Campaign

COMMUNITY PARTNERS

A Child's Dream Too
Academy of Natural Sciences
ACHIEVEability
AFL-CIO
African American Museum of Philadelphia
African Cultural Alliance of North America
American Red Cross of Southeastern Pennsylvania
AOC Real Estate & Property Management
Attic Youth Center
Attleboro Nursing and Rehab Center
Aviation Institute of Maintenance
Barclay Friends
Benjamin's Desk
Black Excellence Sandwiches and Grocery
Black Writers Museum
Bon Appetit
Brandywine Hall

Brandywine Senior Living at Haverford Estates
BrightView Landscape Services
Broomall Presbyterian Village
Bryn Mawr Extended Care
Bryn Mawr Terrace
Campus Philly
Career Wardrobe
Center for Literacy
Chester Valley Nursing & Rehab
ChildCare Careers
City of Philadelphia Offices of Adult Education
Clarifi
Common Ground Management, LLC
Community College of Philadelphia
CVS Health
Darby Free Library
Delaware River Port Authority
The Devon Senior Living
Di Bruno Bros
District 1199C Training and Upgrading Fund
DNP Financial Services
Drexel University
Dunwoody Village
Early Childhood Environments
Einstein Healthcare Network
Elwyn
The Enterprise Center
Episcopal Diocese of Pennsylvania - City Camp
The Franklin Institute
Free Library of Philadelphia
Friends of Independence National Historic Park
The Gaslight Philly
Germantown Home
Get Real, Get Raw
Golden Living Center, Rosemont
Greenfield Senior Living
Grue and Bleen Agency
Habitat for Humanity, Philadelphia
Harston Hall
Here to Assist, Inc.

Hickory House Nursing Home
Historical Society of Pennsylvania
Homeless Advocacy Project
The Humane League
Inglis House
Integrity Staffing
Invisible River
ITTII Welder Training and Certification
Jefferson Health
JEVS at Home
Julius Silver
KForce
KIPP Philadelphia Charter School
KIPP Philadelphia Elementary Academy
Laborers District Council
Lankenau Medical Center
Little Treasures Party Place
Lutheran Settlement House
Manatawny Manor
Maria Quattrone Real Estate Experts
Middle States Association of Colleges and Schools
Mighty Writers
Monkey and the Elephant
OIC of Philadelphia
Olde Kensington Neighborhood Association
Our Closet
PA State Civil Service Commission
Parkhouse Pointe
PAWS
Penn State
Pennsylvania Army National Guard
People's Emergency Center
People's Unemployment Project
The Personal Chef
PHEAA
PHENND/EM Stanton School
Philadelphia Corporation for Aging (PCA)
Philadelphia Fire Department
Philadelphia Police Department 39th District
Philadelphia Water Department
Philly AIDS Thrift
Police Athletic League of Philadelphia

Powerback Rehabilitation
PowerCorps PHL
The Quadrangle
Quakertown Center
Ray of Hope Outreach for Christ Ministries
Regina Nursing Center
Resources for Human Development
Roman Restaurant Group
Rosemont Presbyterian Village
Saunders House
Saxby's Coffee
School District of Philadelphia
Simpson House
Skintastic
Smart Start Academy
Sodexo ES at Hahnemman University Hospital
Springfield Senior Residence
St. Francis Country House
St. Joseph's University
St. Peter's School, Philadelphia
St. Simon the Cyrenian Church
Steamfitters Local 420
Students Run Philly Style
TJX Companies
Tree House Books
Urban Affairs Coalition
Urban Tree Connection
Urbanstead
Victoria's Kitchen
The Watermark at Logan Square
Wawa Markets
Wayne Center
Weaver's Way Community
Wesley Enhanced Living
Year Up
Youth United for Change
YouthBuild Philadelphia
Zhang Sah, Mt. Airy
Zhang Sah, Queen Village

GIFT-IN-KIND INDIVIDUALS

Anonymous
Kimberly Anderson
Kathy Andrews
The Rev. Carol R. Anthony
Taneka Artis-Hobson
Mr. and Mrs. Markham Ball
Tiana Blackson
Mr. and Mrs. Charles J. Bloom
Amy Bluemle and David Cohen
Matt Boatmon
Mr. and Mrs. Albert C. Boris III
Mr. and Mrs. Richard Boyko
Kathleen S. Bright
William S. Bireley and Lisa Brunner-Bireley
The Rev. Judith M. M. Buck Glenn and Gary Glenn
Greta Bunin
Ibraheim Campbell
Mary Ross Carey
Dennis C. Carroll
Lewis C. Cassidy
Mr. and Mrs. Michael J. Catania
Chris Claypoole
Mr. and Mrs. Harrison H. Clement, Jr.
Mr. and Mrs. Darren Clipston
Betsey and Ward Corkran
Marjorie Coxe
Kelly DeFinis
Dayna Defiore
Mr. and Mrs. Darrell DeMoss
Doris DeVose
Frederick W. Dougherty
Patty and Jim Earhart
Aretha M. Evans
Mr. and Mrs. William H. Eyre, Jr.
Michael Frisco
Don and Betty Graff
Laura Graham
Nicole Green
Renneth Grey

Mr. and Mrs. David E. Griffith
Mr. and Mrs. Frank Grundstein
Mabel Haggerty
Frederica L. Hammerstrom
Carol Hart Harris
Denny and Peggy Hatch
Betty Holmes
Kevin Hook
Scott Idol
Sheila Jamison-Schwartz
Mr. and Mrs. Kenneth E. Jones
Mary Anne D. Justice
Ramana Kanumalla
Jennifer M. Kirkpatrick
Mr. and Mrs. John Knox
Jacqueline H. Leonard
Tammy Lewis
Mr. and Mrs. Roger B. Lind
Mr. and Mrs. Rafael I. Lissack
Mr. and Mrs. Lance Lorch
Laurie J. Mackenzie
Jessica Main
Paula R. Mandle
Mr. and Mrs. Christopher J. Manogue
Cathy Mason
Mr. and Mrs. Andrew V. Masterman
Mary and Bob McAdoo
Mrs. William L. McLean III
Elizabeth Ray McLean
Elaine F. McMahon
Erin Meixelsperger
Mr. and Mrs. Geoffrey Middleton
Mr. and Mrs. Douglas K. Miles
Mr. and Mrs. Kevin Miller
Mr. and Mrs. Jeff Mooney
Liz Wilson Morello
Donna Morris
Kim W. Morris
Mr. and Mrs. Samuel W. Morris, Jr.
Mr. and Mrs. Percival B. Moser III
Lois S. Muscheck
Myrtle J. Musetti
Mr. and Mrs. Charles Myers
Mr. and Mrs. Christopher J. Myers

Karen Reuter Nagel
Mr. and Mrs. Charles Nelsen
Kelly Nelson
Mr. and Mrs. Lathrop B. Nelson III
Mr. and Mrs. Ryan S. Northington
Mr. and Mrs. Michael W. Orler
Mary Ottaviano
Mr. and Mrs. B. Craig Owens
Cliff and Ellen Pemberton
Mr. and Mrs. Todd C. Peterson
John and Emily Pickering
Hannah Poole
Mr. and Mrs. Coy W. Purcell
Mr. and Mrs. Peter D. Quinn
Mr. and Mrs. John Raines
The Rev. Hillary D. Raining and
Kenneth A. Raining
The Rev. Dr. Doris Rajagopal
Sapan Ransome
Rivka Rappaport
Mr. and Mrs. James H. Rich, Jr.
Mr. and Mrs. Karl R. Ricker
Miss Marcia J. Rogers
Alexandra Ross and Evan Guthrie, M.D.
Mr. and Mrs. Peter Ross
Mr. and Mrs. Paul Ross
Denise Rupp
Dorrie Schenkel
Amber Leach Selway
Laura Sieckmann
Charles A. Silio and Emily K. Snell
Mr. and Mrs. John Spadea
Tad Sperry and Ellen Harvey
Usha Srinivasan and Fred Stevens
Mr. and Mrs. Kevin R. Steele
Mr. and Mrs. Scott Stephan
Mr. and Mrs. Christopher Stromberg
Rosemarie Stuart
Mr. and Mrs. Thomas H. Suddath, Jr.
Cynthia L. Teagle
Evan Thai
Michael N. Trbovich, Jr. and
Sheila M. McKenna
Zahurul Ukhtiyeh

The Rev. and Mrs. Richard L. Ullman
Susan C. Van Allen
Elizabeth E. R. and
Duncan W. Van Dusen
Mr. and Mrs. Wilson C. Vandiver
Jance Vincent
Shanay Watson
Mr. and Mrs. Matthew A. White
Elaine B. Whitman
Carter and Ginny Williams
Francine Williams

GIFT-IN-KIND
ORGANIZATIONS AND
PARISHES

Anonymous
ACHIEVEability
African Episcopal Church of St. Thomas
All Hallows' Church
Alpha Kappa Alpha Sorority, Inc. -
Tau Xi Chapter
Philadelphia Office of Homeless Services
Bala Cynwyd Middle School
Boy Scout Troop #133
Bryn Mawr Presbyterian Church
Calvary St. Augustine
Calvin Presbyterian Church
The Children's Hospital of Philadelphia
Christ Church and St. Michael's
Christ Church, Ithan
Christ Church, Media
Christ Church, Philadelphia
Church of Our Saviour, Jenkintown
Church of St. Andrew and St. Monica
Church of St. Martin-in-the-Fields,
Chestnut Hill
Church of the Advent, Hatboro
Church of the Holy Apostles
and the Mediator
Church of the Holy Trinity,
Rittenhouse Square
Church of the Incarnation, Morrisville
Church of the Messiah, Gwynedd
Church of the Redeemer, Bryn Mawr

Church of the Redeemer, Springfield
City Line Chiropractic P.C.
Concerned Parents Network
Cradles to Crayons
FEED The Children
Friendly Friends Baptist Church
Germantown Academy
Girl Scout Troop 7947
Gloria Dei Church
God's Petals of Destiny
Great American Pub
Harambee Institute of Science
and Technology
The Haverford School
Holton Namiotka Jones, Inc.
Holy Temple Church of God in Christ
Linsky's Pharmacy
Maximum Level Barber Shop (S.O.S.)
Memorial Church of the
Good Shepherd, East Falls
Merion Elementary School
Mo'Daur, LLC
Musicopia
Negro Day Event
Nevil Memorial Church of St. George
Overbrook Educational Center
Philadelphia Assembly No. 5 -
Order of Golden Circle
Philadelphia Cathedral
Redemption Episcopal Church,
Southampton
Sara Campbell, Ltd
Shipley School
Sigma Gamma Rho Sorority
Solid Rock Fellowship
Pentecostal Church
SPARKS
St. Alban's, Newtown Square
St. Andrew's-in-the-Field, Somerton
St. Christopher's Church, Gladwyne
St. David's Church, Manayunk
St. David's Church, Radnor
St. Dunstan's Church, Blue Bell
St. George St. Barnabas Church

St. John's Church, Lower Merion
St. Joseph's University
St. Mark's Church, Honey Brook
St. Martin's Church, Radnor
St. Mary's Church, Ardmore
St. Mary's Church, Hamilton Village
St. Matthew's Church, Maple Glen
St. Paul's Church, Chestnut Hill
St. Paul's Church, Doylestown
St. Peter's Church in the Great Valley
St. Peter's Church, Philadelphia
St. Peter's School, Philadelphia
St. Thomas' Church, Whitemarsh
The Swarthmore Group
SYSCO Philadelphia
Teenagers In Charge/MOBS Move Philly
Trinity Church, Ambler
Trinity Church, Gulph Mills
Trinity Church, Oxford
Trinity Church, Solebury
Triumph Baptist Church
Triumph Baptist Church
Washington Memorial Chapel
Wells Fargo Asset Management

VOLUNTEERS
INDIVIDUALS

The Rev. Barbara Abbott
Christina Aborlleile
Patty Abramson
Jeanne H. Adams'
Vin Ahuja
Helen L. Allen
Heather Alleva
Carl Anderson
Taylor B. Anderson
Stuart Andrews
Ashleigh Ange
Roxanne Anhalt
Phyllis Armeli
Susan W. Ayres
Fred Barfoot

Sharon P. Barr
Daria Barsuk
Josh Bartek
Joe Bartram
Rita M. Basile
Jane Baushaw
Ellen W. Baxter
Joan B. Bedell
Carolyn Bedics
James and Carol Beers
Ginny Beier
Sherree Benson
Charlotte Biddle
Fran Blasé
Marlene Blume
Lauren Boffa-Taylor
Mr. and Mrs. John H. Bomberger IV
Mr. and Mrs. William Bostard
Richard Boyko
Kaitlin Brandstadter
Stephen Bremner
Charles Brennan
Ashley Brenner
Jean Brubaker
Allison Brunner
Kurt W. Brunner
Deborah Buck
Keiya Buckner
Mr. and Mrs. Carlos Bueno
Abby Bugbee
Nicole Burke
Ron and Maureen Burling
Jay Butler
David Byron
Ana Campbell
The Rev. David A. Canan
Stacy Cannon
The Rev. Mariclaire Partee Carlsen
Sabrina Carrington
Debbie Carter
Joshua Castano
David Castro-Diephouse
Colby Cauchon

Surekha Chalamalasetty
Chris Claypoole
Doris Cohen
Drew Cohen
Evan Cohen
Susan Collins
Madeline Cook
Susan Cooper
Taja Copeland
Heather Coyne
Dana Cronin
Sally Curley
Dr. Penelope C. Cutler and
Dr. William Cutler
Connie Davies
Dan Davis
Evrhett Davis
Kelly Davis
Miles and Susan Davis
Brianna Dawson
Sarah E. B. Deacle
Barbara DeFeo
Julia B. DeMoss
Rebecca Dempsey
The Dervishian Family
Lynore DeSilets
Mr. and Mrs. Hans Deviso
Miriam Diamond
Nikki Diamond
Emily Diaz-Leal
Eugene Dichter
Karen Dinger
Jane Dmochowski
The Doane Family
Sharon Dooley
Michele Dougher
Virginia R. Doyle
Cassandra Dudek
Pat Dyer
Sarah Eckrich
Mr. and Mrs. David Eddy
Priya Eddy
Karen Eifler

Marianne R. Emmett
Pat Endy†
Elizabeth Essick
Pamela M. Faber
Mary K. Fahy
Danielle Farr
Faith Fenderson
Brittany, Sean, Rhett,
and Jack Fickling
Nancy Fien
Arlene Fisk and
Stuart Haimowitz
Donna Force
Mindy Foster
Brianna L. Foti
Mr. and Mrs. William Fox
Rebecca Freedman
Ivanna Freeman
Jared Frenzel-Sulyok
Mia Fries
Michelle Gallagher
Jennifer, Sophia, and
Isabella Gaudioso
Rhona Gerber
Teresa Gillen
Tom Glancey
Arielle Gold
Hank Goldring

Denine Gorniak
The Rev. Donald T. Graff
Jackie Griffith
Allison Grossman
Mr. and Mrs. Gregory Gutierrez
Susan Hacker
Robert Hadfield
Robin Haller
Bonnie Hamm
Gina Hanna
Lisa Hanson
Holly Hardester
Efram Harkins
John Harrison
Marcy W. Hasbrouck
Alana Hausker
Beverly Hayden and James Taylor
Dr. Mary Hazard
Mary Beth Hegeman
Mr. and Mrs. Henry Hitchcock
Sharline K. Heller
Patricia Henningsen
James Henry
Rick Herman
Ron, Henry, William, and Peter Hicks
Brian Hines
Terry N. Hirshorn

“It is rewarding to give to ECS
because I know the gift will be
targeted to those in great need
and will be managed well by a
terrific and committed staff.”

—ELIZABETH USEEM

Antoinette C. Hoffacker
The Hoffman Family
David Hoffman
Edward Holmes
Joseph Hosington
John House
Paul Hughes
Melva Jackson
Laurie Jacobs
Roby Jacobs
Andrea P. Jack
Mr. and Mrs. Dennis Jacquette
Jean Jaffe
Christine James
Sheila Jamison-Schwartz
Naomi Johner
Myra Johnson
Nora Johnson
Gloria L. Jordan
Jay Joyce
Sandra, Alex, and Aiden Judd
Katrina Kadisevkis
Carol A. Kane
Andrew E. Kantra and
Malaine R. Reed
Agata Karpowicz
William Keenan
Dana Kelley
John C. S. and Miriam P. Kepner
The Rev. John Kimball
Paulette Kimble
Abbie Kinzler
Mr. and Mrs. Randolph Klein
Savannah Koehne
Jenifer Kohlhas
Caroline Komlo
Francesca Kotey
Ms. Barbara C. Kozemchak
Carole Krasick
Paul Krauth, Jr.
Cynthia Krieger
Lisa Krieger
Ken Kronomos

Marcia Kung
Virginia Kyle
Mary Ann Lawrence
Jean Lee
Breanna Lengel
Jacqueline H. Leonard
Diana Lin
Mr. and Mrs. Kyle Lissack
Zelda Litt
Vlad Litvak
Ron Livingston
Susie Lloyd
Jean S. London
Rey Lopez
Elizabeth Loy
Deborah Lynch
Anniyah Mack
Shirlee Maglietta
Paulina Malek
Kelsey Malone
Mr. and Mrs. Earl Maltz
Paula R. Mandle
Melissa Mark
Emily Marston
Janet F. Martin
McKinsi Martin
Myrtle Matchett
Jillian Mayer
Timothy McCarthy
Elisabeth McCombe
Jill McConnel
Randall J. McDowell
Martha McGraw
Carolyn M. McKenna
Erin McKenna
Delaney McKeon
Nancy McLaughlin
Leah McTiernan
Jeff Meckler
Erin Meixelsperger
Keity Mendes
Leida Mendez
Nancy Middlebrook

Katherine Miller
Mr. and Mrs. Jeffrey Miller
Megan Miller
Bill Millhollen
Patricia A. Mingey
Colleen Miraglia
Joseph Mohrbacher
Sue Mooney
Meredith More
Kimberly W. Morris
Samantha Morse
Ann Morton
The Rev. Sean E. Mullen
Diana L. Mulroy
Missy Mundy
Katie Munyan
Nancy Munyan
Alex Murphy
Cynthia R. Muse
Charles Myers
Dr. Savuol Ngo
Andrew Nguyen
Chau Nguyen
Hoat Nguyen
Nathan Nicholson
Karlin Northrop
Francesca Northrup
Linda Nosser
Jane T. Nyiri
Connie O'Brien
Michael O'Brien
Jen Oliver
Ashley Orleans
Carmen Ortiz
Kristin Ostendorf
Lisa M. and Christopher J. Pacheco
Henry Pashkow
Margaux Pelegrin
March W. Pepper
Charlotte Petsopoulos
William Petty
Addie Peyronnin
Joseph Phillippe

Brian Pitts
Marita W. Podder
Kathleen Poliski
Barbara Powell
Terrence Quirin
Alexandra Radu
Kalpana Ramakrishnan
Diane M. Ramsey
Kate Randall
Missy and John Randolph Rankin
Soozung Rankin
Diane Rauchut
Juli Reddy
Kiara Redic
Mr. and Mrs. Thomas Reiter
Mr. and Mrs. Gary Rew
Kristen Richardson
Linda Richardson
Janet Riddle
Griffith Ridgway
Amy Riley
Jordon A. Rockford
Melanie Rose
Shania Rowell
Rose Salzstein
Lisa Scarpello
Dorrie Schenkel
Kathleen Schneer
Karen Schoenewaldt
Joshua Schrier
Hinda Schuman
Lynn Schwartz
Joseph A. Scott
The Rev. D. Joy Segal
Judith A. Shahriari
Kelly A. Sheard
Mr. and Mrs. Timothy M. Shepherd
Cindy Shepperd
Raymond Shetzline
Kristen Shimer
Hedvah Shuchman
Stephanie Sikorski
Dr. Beth Simonowitz
Shirley Smith
Janemarie Smith
Jonne Smith
Patty Smith and Family
Mr. and Mrs. George Smyth
Sarah Snyder
Michael and Anita Soar
Alissa Sperling
Usha Srinivasan
Noah Stansbury
Caroline Steiger
Janet Steiner
Stefan Stemle
Kristen Steuber
Nancy J. Stinson
Joan Strayer
Cyros Strickland
Neville E. Strumpf
Marina, Sarah, and Amelia Stuart
Helene Studdy
Daisy Stuempfig
Mollie A. Suddath
Leslie and Dan Sudock
Catherine Sullivan
Judith A. Switzer
Cynthia Talmadge
Jeanne B. Tanfield
Bartholomew Tantillo
Wanda Tarawaly
Asia Taylor
Cathy Terlescki
Claire Tillman
Margaret Tsukaguchi
Mary E. Turchi
Elizabeth L. Useem, Ed.D.
Linda Van Horn
Sallie L. Van Merkensteijn
Elizabeth Vandiver
Victoria Vega
Cheryl Mae Velasco
Nancy Venditta
Michelle Veronica
Cecilia L. Wagner
Miriam Wandover and Henry Wandover

Christian Wareikis
Jahlil Watson
Mattie Weatherby
Leslie Weiler
Janet Weinstein
James L. Weiss
Mr. and Mrs. John T. Wertz
Lucinda West
Tim Westman and Cassie Westman
Susanne Wherry
Abigail Williams
Larry E. Wilson
Mr. and Mrs. Carl Witzel
Heather A. Witzel
Elizabeth Coggin Womack
Calvin Wongus
Linda Wren
Debbie Yogel
William Young and Christine M. Young
Elizabeth Zack
Saddie Ziglar-Taylor
Dr. Joseph Zorc
Kenneth Zucker

VOLUNTEERS
ORGANIZATION AND
PARISHES

ACHIEVEability
African Episcopal Church of St. Thomas
All Hallows' Church
Bala Cynwyd Middle School
Christ Church and St. Michael's
Christ Church, Ithan
Christ Church, Media
Christ Church, Philadelphia
Christ Church, Pottstown
Church of Our Saviour, Jenkintown
Church of St. Andrew and St. Monica
Church of St. Martin-in-the-Fields, Chestnut Hill
Church of the Advent, Hatboro
Church of the Holy Apostles and the Mediator

Church of the Holy Apostles, Penn Wynne
Church of the Holy Trinity, Rittenhouse Square
Church of the Incarnation, Morrisville
Church of the Messiah, Gwynedd
Church of the Redeemer, Bryn Mawr
Church of the Redeemer, Springfield
DNP Financial Services
Ethical Humanist Society of Philadelphia
FEED The Children
First Presbyterian Church
The First Unitarian Church of Philadelphia
Germantown Academy
Gloria Dei Church
Linsky's Pharmacy
Memorial Church of the Good Shepherd, East Falls
Men's Divisions International (MDI)
Next Level Entertainment, Inc.
Our Mother of Good Counsel
Philadelphia Cathedral
Philadelphia College of Osteopathic Medicine
The Philadelphia School
Redemption Episcopal Church, Southampton
Sara Campbell, Ltd
The School at Church Farm
The Shipley School
St. Alban's, Newtown Square
St. Christopher's Church, Gladwyne
St. Clement's Church
St. David's Church, Manayunk
St. David's Church, Radnor
St. Dunstan's Church, Blue Bell
St. George St. Barnabas Church
St. John's Church, Lower Merion
St. Mark's Church, Honey Brook
St. Mark's Church, Philadelphia
St. Martin's Church, Radnor
St. Mary's Church, Ardmore
St. Mary's Church, Hamilton Village
St. Mary's Church, Wayne
St. Matthew's Church, Maple Glen
St. Paul's Church, Chestnut Hill

St. Paul's Church, Doylestown
St. Peter's Church in the Great Valley
St. Peter's Church, Philadelphia
St. Peter's School, Philadelphia
St. Thomas' Church, Whitemarsh
Temple Beth Zion Beth Israel
The Children's Hospital of Philadelphia
The Swarthmore Group
Trinity Church, Ambler
Trinity Church, Gulph Mills
Trinity Church, Oxford
Trinity Church, Solebury
Trinity Memorial Church
Trinity Playgroup
Villanova University
Washington Memorial Chapel
Wells Fargo Asset Management

HONORARY BOARD
OF TRUSTEES, 2017

Richard A. Ashley, CPA
The Rt. Rev. Allen L. Bartlett Jr.
The Rev. Robert T. Brooks
William C. Bullitt, Esq.
Donald R. Caldwell
Elizabeth M. Cecil, Esq.
Gay P. Gervin
The Rev. Donald T. Graff
James H. Kelch, Jr.
Howard Kellogg
John C. S. Kepner, Esq.
Miriam P. Kepner
Clifford W. Kozemchak
The Rev. Dr. Sadie S. Mitchell, Ed.D.
Clifton A. Ogburn, Ph.D.
Richard G. Schneider, Esq.
Richard L. Smoot
Gail H. Trimble
The Rev. James A. Trimble
Dixie G. Wigton
Julie D. Williams
John L. Wineland

COMMITTEE
MEMBERS, 2017

John A. Affleck
George M. Ahrens
Nathalie Bartle, Ed.D.
Charles A. Blackman
Martin J. Brill
The Rev. Lynn Czarniecki
Brent Doane
John P. Gregg, Esq.†
Lisa Hanson
Catherine R. Higgins
Terry N. Hirshorn
Gordon L. Keen, Jr., Esq.
James H. Kelch, Jr.
Clifford W. Kozemchak
Jean Kozicki
Julia MacMullan
The Very Rev. Donna L. Maree
Nancy Middlebrook
Karl Miller
Harriette Owens-Waldron
Mary E. Sales
Judith A. Shahriari
The Rev. Z. Mark Smith
Daisy Stuempfig
Jennifer Thorpe
Gail H. Trimble
Julie D. Williams

OUR TEAM

Dignity. Justice. Community. Impact. Each of us brings these core values into our work. We mirror these commitments at every level in the organization, be it through program design, inclusion and advocacy, talent development, or agency leadership.



Stay Connected
@ecsphilly
ecsphilly.org

150

STAFF MEMBERS FULLY-TRAINED
IN MOBILITY MENTORING®,
A RESEARCH-INFORMED CASE
MANAGEMENT MODEL

- David E. Griffith, *Executive Director*
- Lindsay Albright, MSW, LSW, *Chief Operating Officer*
- Victoria R. Bennett, MHS, *Chief Inclusion and Advocacy Officer*
- Mark A. Davis, *Chief Technology and Facilities Officer*
- Mary Alice Duff, MSS, MLSP, *Chief of Staff*
- Molly McAndrew, EdM, *Chief of External Relations*
- Victoria Sicks, *Chief Development Officer*
- Arley Styer, MSS, MLSP, *Chief of Programs*
- Angela Vandegrift, CPA, *Chief Financial Officer*
- Melvina Banti, *Assistant Director of OST Programs*
- Caroline Dunleavy, MA, MAR, *Director of Strategy Management*
- Pamela D. Egleston, MSW, LSW, *Director of Health and Wellness Programming*
- Jill Fannon, *Senior Director of Finance*
- Cynthia L. Teagle Gale, *Senior Director of Human Resources*
- Christian Holland, MBA, MDiv, *Senior Director of OST and Youth Programs*
- Jessica Main, MSW, LSW, *Director of The ECS Fund*
- The Rev. Doris Rajagopal, *Missioner of Darby*
- Shirley A. Warner, MSS, MLSP, *Director of Permanent Housing*
- Jeneen Whaley, MSS, *Director of Emergency Housing*

Episcopal Community Services
225 S. 3rd Street
Philadelphia, PA 19106

Nonprofit
Organization
US Postage
Paid
Permit No. 120
Philadelphia PA

“ ... let us love, not in
word or speech, but
in truth and action.”
(1 John 3:18)



Episcopal
Community
Services

215.351.1400
ecsphilly.org